

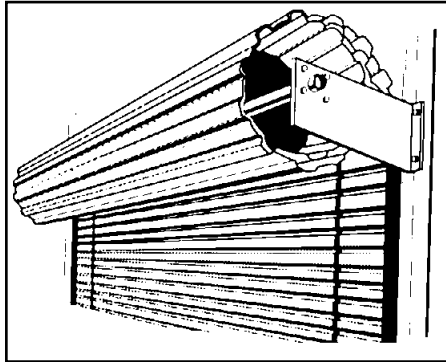


**Due to data loss, we as a convenience to our customers,  
have made available our 2001 catalog for you  
to USE AS A PRODUCT REFERENCE only**

**Please Call 1-800-233-1487 For  
Current 2008 Pricing.**

**Thank you for your interest in American Garage Door Supply Inc.**

# Rolling Doors



**WHY  
PAY  
MORE** ???



We can help you  
select the best  
system.

# ROLLING DOORS - ROLLING STEEL SERVICE DOORS

Our rolling steel service doors are designed for commercial and industrial applications including factories, warehouses, and all types of shipping terminals. Call us today for a custom quote from one of our product specialists for your new or replacement project.



- **Durable Paint Finish.** The best primer paint finish in the industry. A two coat process that combines a base coat for superior adhesion and a top coat designed to provide durability.
- **Smooth Operation.** The guides have a rust-inhibitive, zinc-rich primer. We design the counterbalance, oil tempered, helical torsion springs for a minimum of 20,000 cycles.
- **Reduced Maintenance.** The doors are designed with easily replaceable springs and slats. The entire door nest is enclosed by a protective hood as standard.

- **Quality Packaging.** Each door assembly is carefully protected as it leaves the factory to insure arrival in optimum condition.
- **Easy Installation.** The installer was first in mind in our design process, and made installation logical, with well-labeled and individually packaged hardware.

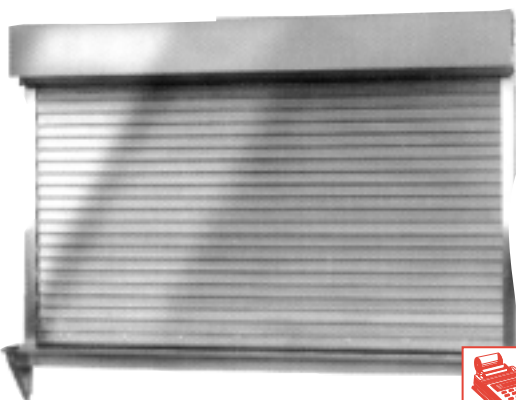
**Need replacement slats for your existing rolling steel doors? See page 30**



- **Curtains.** Curved or flat slats, (flat slat used on standard weatherstripped door). G-90 galvanized with standard two-coat, baked-on primer system consisting of a minimum of 0.3 mils epoxy on each side and a minimum of 0.7 mils of gray polyester paint top coat on each side. Galvanized only slats are available on request.
- **Bottom Bar.** Two galvanized steel angles, minimum 1/8" thick, bolted back to back with an adjustable tubular bottom weatherseal as standard.
- **Wind Load.** Doors are designed to withstand 20 pounds per square foot windload. Optional higher windload designs are available.
- **Guides.** Hot rolled, prime painted angles, minimum 3/16" thick with removable stops are standard. Guides will have windlock bars as design loads indicate.
- **Hood.** 24 gauge gray primed steel as standard. Intermediate hood supports are provided as required on wider doors.
- **Operation.** Chain Hoist included for all doors up to 200 sq. ft. See operator section for operators options.
- **Locking.** Manual chain hoist operated doors up to 200 sq. ft. have a chain keeper suitable for padlocking.
- **Weatherstripping.** The standard weather stripped service door comes with flat slats only and includes an adjustable tubular bottom weatherseal, side vinyl weather seals and a header brush seal with aluminum carrier. Partial weatherstripping and weatherstripping for curved slats is available.
- **Shop Drawings.** Complete information including architectural details and specifications furnished at no extra cost.

## Other Products Available

- Insulated Rolling Steel Service Doors
- Fire Rated Rolling Steel Service Doors
- Counter Shutters
- Fire Counter Shutters



Flat Slat



Curved Slat



Insulated Slat

**To ensure proper fit, form and function of your rolling steel door. Please contact our sales staff with your specifications for a custom quote**

# ROLLING DOORS - ROLL UP DOORS

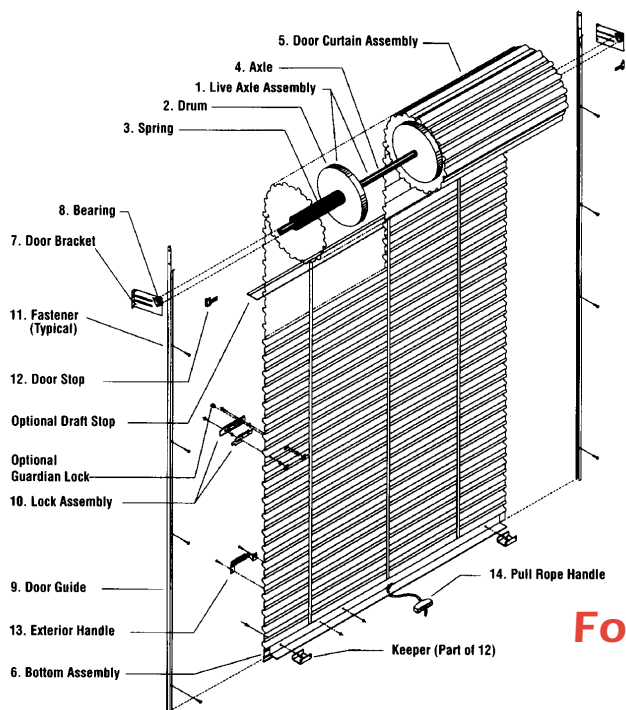
## MODEL 940

### Model 940 Steel Roll-Up Doors Offer:

- Low Maintenance
- Corrosion resistance Bottom Assembly
- Sealed Bearings For Smooth Operation
- Smooth Operation
- Custom Sizes
- 8 Standard, Pre-finished Colors
- 5 Year Paint Warranty
- Full Line Of Accessories



## Easy to Install!



### OPTIONS

- **Draft Stop:**  
4" wide, consists of a 1" rigid PVC® strip and a 3" flexible PVC prepunched along one edge. Attaches to the header.
- **Guardian Lock:**  
Security lock with removable cylinder, over lock capability, tamper proof, comes with 3 keys.
- **Insulation:**  
Double bubble foil reflective insulation with an extra layer of polyurethane coating on the front side for durability. Also helps dampen door noise during operation.
- **Interior Lock:**  
12 gauge zinc coated steel slide bolt locks into the side guide. Two locks per door fasten to the bottom assembly and come with hole for a padlock.
- **Window Kit:**  
20" X 6" clear corrugated plastic, highly flexible and durable. The door must be factory prepared for the window to be field installed. One window per door.
- **Narrow Jamb Bracket Plates:**  
Increases bracket mounting surface width when necessary.
- **Brush Seals:**  
Weather strip fabricated from black brush seal in a mill finish aluminum extrusion. Attaches to side jamb.
- **Hood:**  
Made from the same corrugated steel as the door, the hood covers the door nest for protection or aesthetics.

### 1. Design Type:

Live Axle: door axle rotates in the bracket.

### 2. Drums:

- Stamped, continuously welded to the hub
- 9 1/2" diameter x 1" wide
- 18 gauge zinc coated steel
- 2 drums with doors under 5' wide
- 3 drums with doors 5' wide & wider

### 3. Springs:

- Helical Torsion
- 1 spring under 5'
- 2 springs 5' wide and wider

### 4. Axle:

- 1-5/16" O.D. high yield structural steel tubing.

### 5. Curtain:

- Factory seamed, continuously corrugated
- 26 gauge galvanized steel
- Polyester finish in 8 standard colors
- Full length felt tape at each drum

### 6. Bottom Assembly:

- Zinc coated steel back angle
- Corrosion resistant aluminum extrusion
- Rubber Blade steel
- Stainless steel carriage bolts

### 7. Brackets:

- 12 gauge cold formed zinc coated steel

### 8. Bearing:

- Greased, packed ball bearing in brackets

### 9. Guides:

- 18 gauge zinc coated, 1-1/2" deep
- Attached polypropylene guide runners

### 10. Exterior Lock:

- 12 gauge plated steel
- Stainless steel carriage bolts
- Two padlock design

### 11. Mounting Fasteners:

- Steel:
  - Bracket - 5/16" Diameter bolts and nuts
  - Jamb - 1/4" x 7/8" self-drilling screws
- Wood:
  - Bracket - 5/16"x1-5/8" Washer head lags
  - Jamb - 1/4" x 2" self-drilling screws
- Concrete:
  - Clip type system with 5/16" diameter expansion anchors for both brackets and jambs. (concrete hardware must be ordered separately)

### 12. Door Stop:

- 12 gauge zinc coated door stops

### 13. Exterior Handle:

- Powder coated, zinc plated outside handle

### 14. Pull Rope Handle:

- Molded plastic rope handle

**For a personalized quotation, call us today with your specifications!**

### OPERATORS

#### • Direct Drive Chain Hoist:

9-1/2" outside diameter cast iron pocket wheel with zinc plated steel chain guide. Mounts on a 1" diameter shaft extension to the door axle. Mounts on either side of the door. Chain keeper provided.

#### • Shaft Extension:

Designed to fit the Model 940 door axle, this option is needed to install a chain hoist or a motor operator.

#### • Operators:

Please see operators section for medium duty jackshaft operators

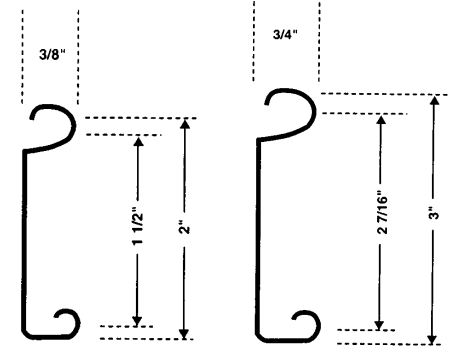
**Eight durable, pre-finished paint colors to match any building. The paint finish is multi-coated for long life. Includes a five year paint warranty. Color selections: Garnet, Desert Tan, Sunset Orange, Royal Blue, Continental Brown, Iced White, Evergreen, Polar Blue.**



# ROLLING DOORS - REPLACEMENT SERVICE DOOR SLATS

## FLAT SLATS

| Universal Slats | Full Slat Interchangeability Charts |                             |                    |   |                          |  |                           |                           |   |                           |
|-----------------|-------------------------------------|-----------------------------|--------------------|---|--------------------------|--|---------------------------|---------------------------|---|---------------------------|
|                 | Kinnear                             | Atlas                       | Apton              | Balfour                                       | Cookson                  | Cornell  | Crawford                  | Lawrence                  | Mahon                                   |                           |
| SF22-2"         | YES<br>#17<br>1-1/2 x 3/8           | YES<br>F1<br>1-1/4 x 1/2    |                    | YES<br>Pygmye<br>1-1/4 x 1/2                  | #10<br>1-1/4 x 1/2       | #1<br>1-1/4 x 1/2                              | 505<br>1-1/4 x 1/2        | YES<br>F<br>1-1/4 x 9/32  | YES<br>F<br>1-1/4 x 3/8                 | ?                         |
| SF30-3"         | YES<br>#14<br>2-7/16 x 3/4          | F-3<br>2-5/8 x 7/8          | F<br>2-1/2 x 7/8   | F<br>2-9/16 x 3/4                             | #4<br>2-9/16 x 5/8       | YES*<br>#5<br>2-5/8 x 2-1/4<br>#2<br>3/4 x 5/8 | YES<br>502<br>2-5/8 x 7/8 | YES<br>T<br>2-5/8 x 7/8   | YES<br>#6<br>2-3/4 x 2-3/16<br>x<br>7/8 | YES<br>#6<br>2-3/16 x 7/8 |
| SF22-2"         |                                     | YES<br>#20 S<br>1-1/4 x 1/2 | F-1<br>1-1/2 x 1/2 | YES<br>F-138<br>1-3/8 x 3/8                   | YES<br>#4<br>1-1/2 x 1/2 |  | 1-1/2 x 1/2               | YES<br>FS<br>2-1/4 x 9/16 | YES<br>F-3<br>2-5/8 x 7/8               | YES<br>F-3<br>2-5/8 x 7/8 |
| SF30-3"         | YES<br>MF-2<br>2-5/8 x 5/8          | YES<br>#30 S<br>2-1/4 x 3/4 | F-3<br>2-1/2 x 7/8 | YES<br>F-265 2-5/8 x 5/8<br>F-267 2-7/8 x 7/8 | YES<br>#3<br>2-1/2 x 3/4 | FF<br>2-9/16 x 25/32                           | F<br>2-3/4 x 3/4          | YES<br>FS<br>2-3/4 x 3/4  | YES<br>F-3<br>2-5/8 x 7/8               | YES<br>F-3<br>2-5/8 x 7/8 |



| Part # | Description  | Ga. | Price/ft. |
|--------|--------------|-----|-----------|
| SF22   | 2" Flat Slat | 22  | \$1.19    |
| SF30   | 3" Flat Slat | 20  | \$1.28    |
| SF38   | 3" Flat Slat | 18  | \$1.44    |

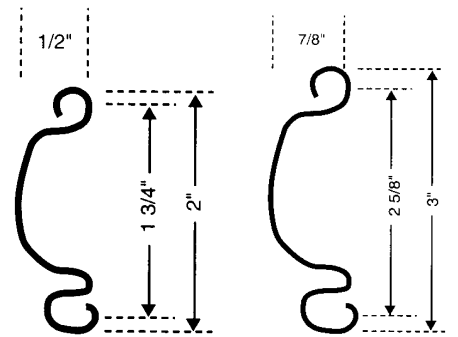


**RIVETS**  
for 2" or 3"  
10¢ ea.

Slats with a YES are believed to be compatible with SF22, SF30 and SF38 slats. Aesthetics cannot be guaranteed. Check dimensions to verify.

## CURVED SLATS

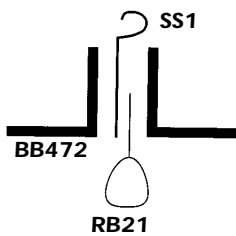
| Universal Slats | Curved Slat Interchangeability Chart |                            |                            |                               |                          |                            |   |                          |                               |     |
|-----------------|--------------------------------------|----------------------------|----------------------------|-------------------------------|--------------------------|----------------------------|---|--------------------------|-------------------------------|-----|
|                 | Kinnear                              | Atlas                      | Apton                      | Balfour                       | Cookson                  | Cornell                    | Crawford                                  | Lawrence                 | Mahon                         |     |
| SF22-2"         | YES<br>#2<br>1 3/4 x 1/2             |                            |                            | YES<br>S<br>1-7/8 x 17/32     | YES<br>#1<br>2-1/4 x 3/4 |                            | YES<br>501-S<br>1-7/8 x 1/2               | YES<br>B<br>2-1/8 x 1/2  | YES<br>#2<br>1-15/16 x 1/2    | YES |
| SF30-3"         | YES<br>#4<br>2-5/8 x 7/8             | YES<br>C-3<br>2-3/4 x 7/8  | YES<br>C<br>2-5/8 x 7/8    | YES<br>L<br>2-3/4 x 25/32     | YES<br>#3<br>3 x 7/8     | YES<br>#4<br>3-5/8 x 7/8   | YES<br>501 C<br>(507 Alt.)<br>2-5/8 x 7/8 | YES<br>A<br>2-5/8 x 7/8  | YES<br>#3<br>2-3/4 x 7/8      | YES |
| SF22-2"         | YES<br>M-2<br>1-3/4 x 1/2            | YES<br>#40<br>1-7/8 x 9/16 | YES<br>SC<br>1-7/8 x 1/2   | YES<br>C-187<br>1-7/8 x 17/32 | YES<br>#1<br>2 x 1/2     | YES<br>SC<br>1-7/8 x 17/32 | YES<br>A<br>2-1/4 x 3/4                   |                          | YES<br>Little 4<br>2.67 x 5/8 | YES |
| SF30-3"         | YES<br>M-3<br>2-5/8 x 7/8            | YES<br>#50<br>2-3/4 x 7/8  | YES<br>SC-3<br>2-5/8 x 7/8 | YES<br>C-275<br>2-3/4 x 7/8   | YES<br>#2<br>2-3/4 x 7/8 | YES<br>LC<br>2-3/4 x 25/32 | YES<br>B<br>2-3/4 x 7/8                   | YES<br>CS<br>2-3/4 x 7/8 | YES<br>Big 4<br>2.67 x 7/8    | YES |



| Part # | Description    | Ga. | Price/ft. |
|--------|----------------|-----|-----------|
| SC22   | 2" Curved Slat | 22  | \$1.19    |
| SC30   | 3" Curved Slat | 20  | \$1.28    |
| SC38   | 3" Curved Slat | 18  | \$1.44    |

**All slat material - prime G-90 galvanized.**  
**Charges to assemble slats \$1.95 per slat.**  
**Crating 2" slats, 12 slats per crate \$10.00**  
**Crating 3" slats, 8 slats per crate \$10.00**

Slats with a YES are believed to be compatible with SC22, SC30 and SC38 slats. Aesthetics cannot be guaranteed. Check dimensions to verify.



### Bottom Bars

| Part # | Description  | Price/ft. |
|--------|--|-----------|
| BB472  | 2"x2" x 11 ga. double angle                              | 8.25      |
| SS1    | Starter slat<br>(Please specify inside or outside mount) | 2.00      |
| RB21   | Vinyl Rolling Steel Bottom Seal                          | 2.10      |

### END LOCKS

| Part # | Description         | Price/pr. |
|--------|---------------------|-----------|
| SCL2   | 2" Curved           | \$2.05    |
| SCL3   | 3" Curved           | \$3.00    |
| SFL2   | 2" Flat             | \$2.05    |
| SFL3   | 3" Flat             | \$3.00    |
| SWL2   | 2" Wind Lock C or F | \$2.40    |
| SWL3   | 3" Wind Lock C or F | \$3.40    |

