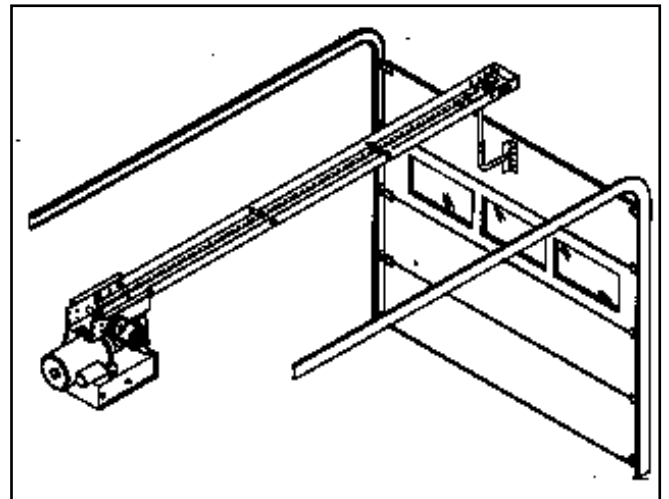
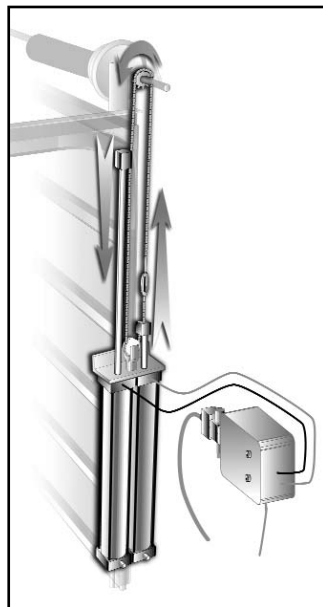
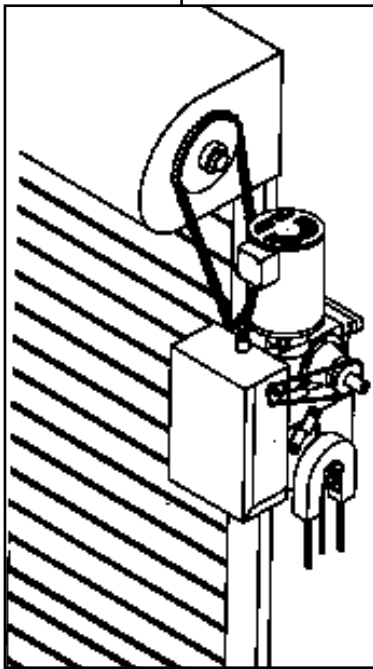
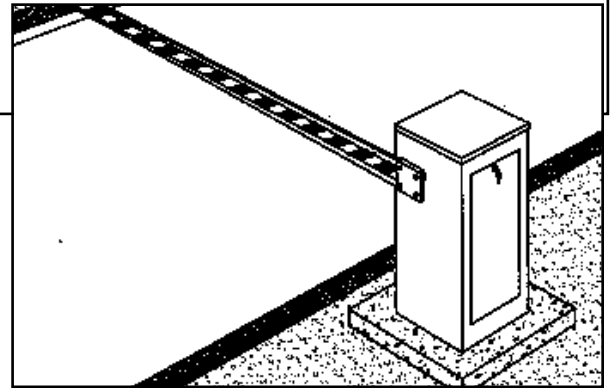
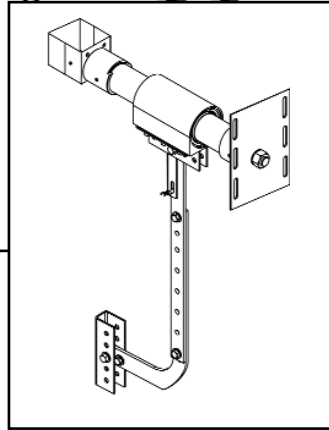
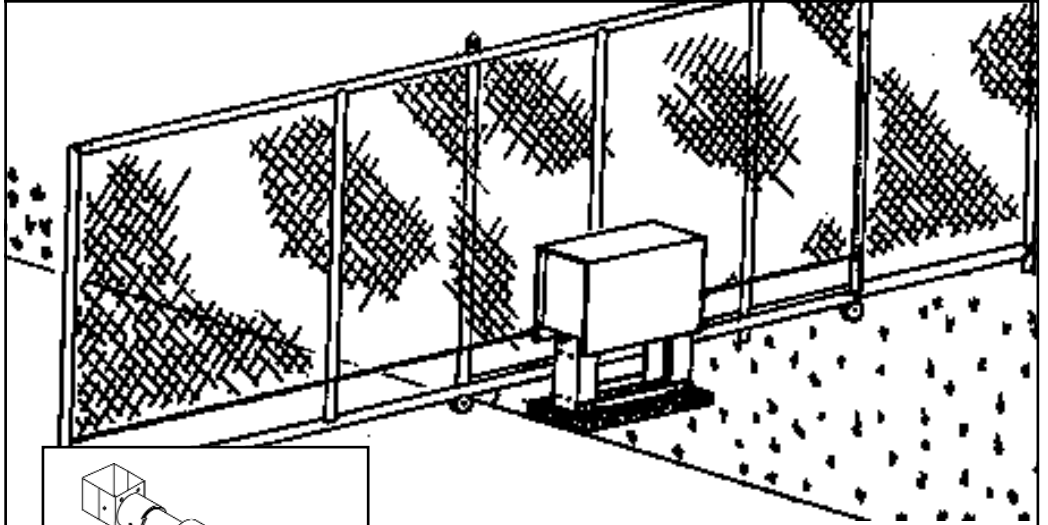
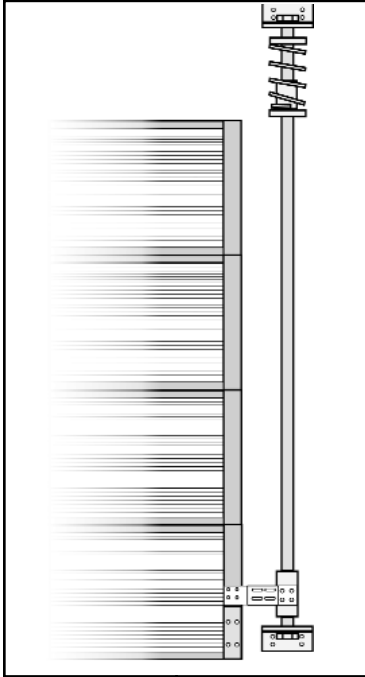


# SECTION 10

# Operators



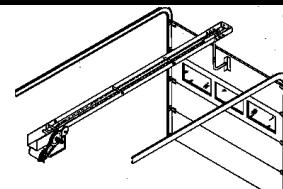
# TROLLEY OPERATORS

## Typical Installation

### Recommended

For use on standard lift doors. Our trolley operators will keep your doors operating smoothly & reliably throughout their operational life. Select from a variety of models to fit your systems needs.

**Use our Toll Free Number and let one of our specialists help you select the correct model for your application.**



## MODEL ATS Light Duty Trolley Operator



MAXIMUM DOOR AREA (SQ. FT.)					
STANDARD SECTIONAL	-	24 ga. Steel	20 ga. Steel	16 ga. Steel	-
	Fiber-glass	Alum. Doors	Wood Doors	-	-
	-	-	24ga. Steel Insul.	20 ga. Steel Insul.	16 ga. Steel Insul.
SQ. FT.	250	210	180	120	80

**NOTE:** On steel insulated doors, a 24 ga. back panel is assumed.

### Applications:

The Model ATS (Advanced Trolley System) door operator is for use on residential or light-duty commercial door applications with standard lift. For doors up to 14' high. Maximum recommended duty cycle: 8 cycles per hour.

### STANDARD FEATURES:

- High-torque 1/2 HP 115V single-phase motor with instant reverse
- Heavy-duty steel "I-beam" configured trolley track for doors up to 10' high standard; 12' and 14' optional
- Automatic safety reverse/automatic door stop
- Includes The Protector System® non-impact infrared safety device
- Auto-reconnect trolley
- "Smart" radio receiver for one-touch security code programming (transmitters sold separately)
- Door speed approximately 8 to 9 inches per second
- Motor overload protection
- 1-button control station
- Automatic light delay

The ATS meets all current federal and state laws and UL 325 safety standards for residential and commercial applications

**1 Year Warranty**



Model	HP	Volt/PH	Price
ATS211R	1/2	115/1	\$389.00

### Additional Track:

**Required for doors higher than 10 ft.**

Part #	Add to list Price
10' Track upcharge for doors over 8' and up to 10'	\$29.00
12' Track upcharge for doors over 10' and up to 12'	\$53.00
14' Track upcharge for doors over 12' and up to 14'	\$109.00

## MODEL MT Medium Duty Trolley Operator



MAXIMUM DOOR AREA (SQ. FT.)					
STANDARD SECTIONAL	-	24 ga. Steel	20 ga. Steel	16 ga. Steel	-
	Fiber-glass	Alum. Doors	Wood Doors	-	-
	-	-	24ga. Steel Insul.	20 ga. Steel Insul.	16 ga. Steel Insul.
SQ. FT.	310	260	225	150	100

**NOTE:** On steel insulated doors, a 24 ga. back panel is assumed.

### APPLICATIONS:

The Model MT door operator is for use on standard lift sectional doors up to 14' high and up to 12 cycles per hour.

### Standard Feature

- Auxiliary Reversal System (see inset)
- 3-button control station
- Accepts sensing device and standard radio receiver
- High-starting torque motor with overload protection
- Fully adjustable linear-driven limit mechanism
- 24VAC control circuit
- Heavy-duty 4L V-belt
- Type C2 wiring standard, B2 easily field set by moving 1 jumper wire
- Prewired to accept sensing devices (see Sensing Devices - Safety Accessories)
- Long-life dry-type motor capacitor
- Efficient V-belt drive with two-stage speed reduction
- Adjustable friction clutch
- Emergency disconnect for manual operation
- Heavy-duty 2" x 2" double-angle iron track for up to 14' high door included with swing-up header bracket
- Quiet-gliding rail spacers
- Motor removable without affecting limit settings
- Baked-on high-durability black powdercoat finish
- #48 roller chain drive
- Door speed approximately 8 to 10 inches per second

### Auxiliary Reversal System:

The Auxiliary Reversal System works in tandem with the adjustable clutch to detect if a closing door meets an obstruction. If an obstruction is met and causes the clutch to slip, the Auxiliary Reversal System will return the door to the full-open position. The Auxiliary Reversal System is designed to protect the door and motorized operator. It is not intended as a replacement for a safety sensing device.

**2 Year Warranty**



Model	HP	Volt/PH	Price
MT-50-11	1/2	115/1	\$444.00

### Units With Solenoid Brake - Order Model BMT

BMT-50-11	1/2	115/1	\$@@@.00
-----------	-----	-------	----------

Solenoid brake cannot be added in the field

### ADDITIONAL TRACK- Required for doors higher than 12 ft. Add to List Price

For doors up to 14 feet .....\$18.00

**See Page 67 For Options**

**Warning:** This door operator is intended for use on vehicular doors. MOTORIZED VEHICULAR DOORS CAN CAUSE SERIOUS INJURY OR DEATH!. Use entrapment protection equipment and other safety accessories on every door system.

**2 Year  
Warranty**



Model	Volt/PH	Price
<b>1/3 H.P.</b>		
T-33-11 (L or M)	115/1	\$496.00
T-33-21 (L or M)	230/1	509.00
T-33-23 (L or M)	208/230/3	531.00
<b>1/2 H.P.</b>		
T-50-11 (L or M)	115/1	\$531.00
T-50-21 (L or M)	230/1	551.00
T-50-23 (L or M)	208/230/3	574.00
<b>3/4 H.P.</b>		
T-75-11 (L or M)	115/1	\$646.00
T-75-21 (L or M)	230/1	664.00
T-75-23 (L or M)	208/230/3	698.00
<b>1 H.P.</b>		
T-10-11 (L or M)	115/1	\$793.00
T-10-21 (L or M)	230/1	811.00
T-10-23 (L or M)	208/230/3	848.00

Please indicate Control Input

M= Mechanical  
L= Logic Board

**ADDITIONAL TRACK-  
Required for doors higher than 12 ft.  
Add to List Price**

For doors up to 14 feet .....	\$18.00
For doors up to 16 feet .....	\$36.00
For doors up to 18 feet .....	\$54.00
For doors up to 20 feet .....	\$72.00
For doors up to 24 feet .....	\$90.00

**See Page 67 For Options**

**Applications:**

The Model T continuous-duty door operator is designed for use on industrial sectional overhead doors with standard lift.

**Standard Features:**

- Choice of 2 Control Circuits:
- Logic 3.0 Control Board (L3) Available for 115V, 208/230V, 460V and 575V
- Reversing Contactor Circuit (M) Features size 0 industrial linear contactor
- High-starting torque continuous-duty motor with overload protection
- Heavy-duty 5L V-belt
- 3-button control station
- Type C2 wiring standard, B2 easily field set by moving 1 jumper wire or setting a switch positioning dial
- Prewired to accept sensing devices (see Sensing Devices – Safety Accessories)
- Industrial ball bearings on output shaft
- External radio control terminals
- 24VAC control circuit (M), 5V DC (L3)
- Motor removable without affecting limit settings
- NEMA 1 type electrical enclosure
- Adjustable friction clutch
- Emergency disconnect for manual operation
- Fully adjustable linear-driven limit mechanism
- Solenoid brake on 3/4 and 1 HP units standard
- Trolley track for doors up to 12' high standard with swing-up header bracket
- Quiet-gliding rail spacers
- #48 roller chain drive on 1/3, 1/2 HP models
- #41 roller chain drive on 3/4, 1 HP models
- Baked-on high-durability black powdercoat finish
- Door speed approximately 8 - 12 inches per second

**MODEL T  
Low Profile Industrial Duty  
Trolley Operator**



MAXIMUM DOOR AREA (SQ. FT.)						
STANDARD SECTIONAL		-	24 ga. 22 ga. Steel	20 ga. Steel	16 ga. Steel	-
		Fiber-glass	Alum. Doors	Wood Doors	-	-
		-	-	24ga. Steel Insul.	20 ga. Steel Insul.	16 ga. Steel Insul.
H.P.	1/3	310	285	260	175	125
	1/2	400	350	320	250	200
	3/4	560	500	450	325	275
	1	640	625	560	400	310

**NOTE:** On steel insulated doors, a 24 ga. back panel is assumed. If a heavier back panel is supplied, use the next higher H.P. rating. A dual trolley modification is recommended for doors 22 ft. or wider. See modifications section.

**2 Year  
Warranty**



Model	Volt/PH	Price
<b>1/2 H.P.</b>		
GT-50-11 (L or M)	115/1	\$996.00
GT-50-21 (L or M)	230/1	1013.00
GT-50-23 (L or M)	208/230 3	1042.00
<b>3/4 H.P.</b>		
GT-75-11 (L or M)	115/1	\$1082.00
GT-75-21 (L or M)	230/1	1088.00
GT-75-23 (L or M)	208/230 3	1135.00
<b>1 H.P.</b>		
GT-10-11 (L or M)	115/1	\$1182.00
GT-10-21 (L or M)	230/1	1198.00
GT-10-23 (L or M)	208/230/3	1248.00
<b>1.5 H.P.</b>		
GT-15-11 (L or M)	115/1	\$@@@.00
GT-15-21 (L or M)	230/1	\$@@@.00
GT-15-23 (L or M)	208/230/3	\$@@@.00

Please indicate Control Type:  
M= Mechanical Controls  
L= Logic Board

**ADDITIONAL TRACK-  
Required for doors higher than 12 ft.  
Add to List Price**

For doors up to 14 feet .....	\$18.00
For doors up to 16 feet .....	\$36.00
For doors up to 18 feet .....	\$54.00
For doors up to 20 feet .....	\$72.00
For doors up to 24 feet .....	\$90.00

**Applications:**

The Model GT continuous-duty door operator is for use on standard lift sectional doors.

**Standard Features**

- Choice of 2 Control Circuits:
- Logic 3.0 Control Board (L3) Available for 115V, 208/230V, 460V and 575V
- Reversing Contactor Circuit (M) Features size 0 industrial linear contactor
- Choice of 2 Control Circuits:
- Logic 3.0 Control Board (L3) Available for 115V, 208/230V, 460V and 575V
- Reversing Contactor Circuit (M) Features size 0 industrial linear contactor
- Choice of 2 Control Circuits:
- Logic 3.0 Control Board (L3) Available for 115V, 208/230V, 460V and 575V
- Reversing Contactor Circuit (M) Features size 0 industrial linear contactor
- High-starting torque continuous-duty motor with overload protection
- 3-button control station
- Type C2 wiring standard, B2 easily field set by moving 1 jumper wire or setting a switch positioning dial
- Prewired to accept sensing devices (see Sensing Devices – Safety Accessories)
- Industrial ball bearings on output shaft
- External radio control terminals
- Driven limit switches, fully adjustable
- 24VAC control circuit (M), 5V DC (L3)
- Solenoid-actuated disc brake
- Heavy-duty wormgear-in-oil-bath speed reducer
- Industrial-duty adjustable torque limiter
- NEMA 1 type electrical enclosure
- Emergency disconnect for manual operation
- Fully adjustable linear-driven limit mechanism
- Trolley track for doors up to 12' high standard with swing-up header bracket
- Quiet-gliding rail spacers
- #41 roller chain drive
- Door speed approximately 11-12 inches per second

**MODEL GT  
Heavy Industrial Duty  
Trolley Operator**



MAXIMUM DOOR AREA (SQ. FT.)						
STANDARD SECTIONAL		-	24 ga. 22 ga. Steel	20 ga. Steel	16 ga. Steel	-
		Fiber-glass	Alum. Doors	Wood Doors	-	-
		-	-	24ga. Steel Insul.	20 ga. Steel Insul.	16 ga. Steel Insul.
H.P.	1/2	400	350	320	250	200
	3/4	560	500	450	325	250
	1	625	575	500	400	300
	1-1/2	-	625	550	475	380

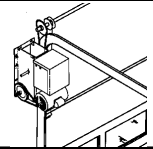
**NOTE:** On steel insulated doors, a 24 ga. back panel is assumed. If a heavier back panel is supplied, use the next higher H.P. rating. A dual trolley modification is recommended for doors 22 ft. or wider. See modifications section.



# JACKSHAFT OPERATORS

## Recommended

For use on sectional or rolling steel type doors with high lift or full vertical lift type tracks. Our jackshaft operators will keep your doors operating smoothly & reliability throughout their operational life. Select from a full line of models to fit your application. Can't decide on the correct model for your door? Call our Toll Free number and let us help you select the current model for your application



## MODEL MJ Medium Duty Jackshaft Operator



### Applications:

The Model MJ door operator is designed for use on industrial sectional doors with high or vertical lift and small rolling doors and grilles. Maximum recommended duty cycle: 12 cycles per hour.

### Standard Features:

- 3-button control station
- High-starting torque motor with overload protection
- Long-life dry-type capacitor
- Solenoid brake, standard
- Type C2 wiring standard, B2 easily field set by moving 1 jumper wire
- Prewired to accept sensing devices (see Sensing Devices - Safety Accessories)
- 24V control circuit
- Fully adjustable linear-driven limit switch mechanism
- Motor removable without affecting limit settings
- External radio control terminals
- NEMA 1 type electrical enclosure
- Adjustable friction clutch
- Efficient V-belt primary drive, chain/sprocket secondary
- Floor level disconnect for emergency manual operation
- Baked-on high-durability black powdercoat finish
- Door speed approximately 8 to 9 inches /second

**1 Year  
Warranty**



Model	HP	Volt/PH	Price
MJ-50-11	1/2	115/1	\$@@@.00

### Door Sprocket Substitutions:

Sprocket Desc.	Add to list Price
41B32 Sprocket, 1" Bore, 1/4" Keyway, Standard for Sectional Doors .....	N/C
Recommended for rolling doors .....	\$9.00
For all other sprocket recommendations .....	Consult Factory

MAXIMUM DOOR AREA (SQ. FT.)						
ROLLING	24 ga. Steel	22 ga. Steel	-	20 ga. 18 ga. Steel	16 ga. Steel	-
	Alum. Grilles	Alum. Doors	-	Steel Grilles	-	-
SECTIONAL	-	24 ga. 22 ga. Steel	20ga. Steel	-	16 ga. Steel	-
	Fiber Glass	Alum. Doors	Wood Doors	-	-	-
	-	-	24 ga. Steel Insul.	-	20 ga. Steel Insul.	16 ga. Steel Insul.
SQ. FT.	320	275	250	200	160	120

**NOTE:** 1. The MJ operator is not recommended for use on large or high rolling doors without chain hoist modifications. (see Model MH) 2. On steel insulated doors, a 24 ga. back panel is assumed.

## MODEL J Industrial Duty Jackshaft Operator



### Applications:

The Model J continuous-duty door operator is designed for use on industrial sectional doors with high or vertical lift, and rolling doors and grilles.

### Standard Features:

- Choice of 2 Control Circuits:
  - Logic 3.0 Control Board (L3) Available for 115V, 208/230V, 460V and 575V
  - Reversing Contactor Circuit (M)
  - Features size 0 industrial linear contactor
- High-starting torque continuous-duty motor with overload protection
- Heavy-duty 5L V-belt
- 3-button control station
- Industrial ball bearings on output shaft
- PosiLock® mechanical system acts as a holding brake
- Type C2 wiring standard, B2 easily field set by moving 1 jumper wire or setting a switch positioning dial
- Prewired to accept sensing devices
- External radio control terminals
- 24V control circuit (M), 5V DC (L3)
- Fully adjustable linear-driven limit mechanism
- Efficient V-belt primary drive, chain/sprocket secondary
- NEMA 1 type electrical enclosure
- Adjustable friction clutch
- #50 drive chain
- Floor level disconnect for emergency manual operation
- Baked-on high-durability black powdercoat finish
- Door speed approximately 8 to 9 inches /second

**2 Year  
Warranty**



Model	Volt/PH	Price
-------	---------	-------

<b>1/3 H.P.</b>		
J-33-11 (L or M)	115/1	\$557.00
J-33-21 (L or M)	230/1	575.00
J-33-23 (L or M)	208/230 3	604.00
<b>1/2 H.P.</b>		
J-50-11 (L or M)	115/1	\$616.00
J-50-21 (L or M)	230/1	630.00
J-50-23 (L or M)	208/230 3	655.00
<b>3/4 H.P.</b>		
J-75-11 (L or M)	115/1	\$665.00
J-75-21 (L or M)	230/1	679.00
J-75-23 (L or M)	208/230 3	718.00
J-75-38 (L or M)	380/3	@@@.00
<b>1 H.P.</b>		
J-10-11 (L or M)	115/1	\$772.00
J-10-21 (L or M)	230/1	785.00
J-10-23 (L or M)	208/230/3	824.00

Please indicate Control Type:  
M= Mechanical Controls  
L= Logic Board

MAXIMUM DOOR AREA (SQ. FT.)						
ROLLING	24 ga. Steel	22 ga. Steel	-	20 ga. 18 ga. Steel	16 ga. Steel	-
	Alum. Grilles	Alum. Doors	-	Steel Grilles	-	-
SECTIONAL	-	24 ga. 22 ga. Steel	20ga. Steel	-	16 ga. Steel	-
	Fiber Glass	Alum. Doors	Wood Doors	-	-	-
	-	-	24 ga. Steel Insul.	-	20 ga. Steel Insul.	16 ga. Steel Insul.
H.P.	310	285	260	210	175	125
1/3	400	350	320	280	250	200
1/2	560	500	450	380	325	250
1	640	625	560	475	400	310

**NOTE:** 1. The J operator is not recommended for use on large or high rolling doors without chain hoist modifications. (see Model H) 2. On steel insulated doors, a 24 ga. back panel is assumed. If a heavier door is supplied, use the next higher H.P. rating. For doors 22 ft. wide by 20 ft. high and larger call factory

### Door Sprocket Substitutions:

Sprocket Description	Add to list Price
<b>50B18 Sprocket</b> , 1" Bore, 1/4" Keyway, Std for Sectional Doors	N/C
<b>50B40 Sprocket</b> , 1" Bore, 1/4" Keyway, Recommended for rolling doors	\$9.00
For all other sprocket recommendations	Consult Factory

**For Options  
See Page 67**

**Warning:** This door operator is intended for use on vehicular doors. **MOTORIZED VEHICULAR DOORS CAN CAUSE SERIOUS INJURY OR DEATH!** Use entrapment protection equipment and other safety accessories on every door system.

**2 Year Warranty**



Model	HP	Volt/PH	Price
LGJ-25-11	1/4	115/1	\$700.00

**Door Sprocket Substitutions:**

Sprocket Desc.	Add to list Price
<b>41B32 Sprocket,</b> 1" Bore, 1/4" Keyway, Standard for Rolling Doors.....	N/C
<b>41B32 Sprocket,</b> Non-std. bore and Keyway for rolling Doors .....	\$@@
<b>41B30 Sprocket,</b> 1" Bore, 1/4" Keyway, Standard for Sectional Doors .....	N/C
Recommended for sectional doors .....	N/C
For all other sprocket recommendations .....	Consult Factory

**Options**

Desc.	Add to list Price
1090951 Hood Mount Bracket	\$@@

**Applications:**

The Model LGJ door operator is designed for use on rolling grilles and shutters, and small rolling doors. Maximum recommended duty cycle: 7 cycles per hour.

**Standard Features:**

- Internal door lock sensing circuit
- 3-button control station
- Solid state control and motor drive
- High starting torque motor with overload protection
- 24VAC control circuit
- Long-life dry type capacitor
- Heavy-duty wormgear-in-oil-bath speed reducer
- Prewired to accept sensing devices
- Fully adjustable linear driven limit switch mechanism
- Motor removable without affecting limit settings
- NEMA 1 type electrical enclosure
- Floor level disconnect for emergency manual operation
- 41832 door sprocket and #41 drive chain, included
- Baked-on high durability black powder coat finish

**MODEL LGJ  
Light Duty  
Gearhead  
Reduced  
Operator**



MAXIMUM DOOR AREA (SQ. FT.)				
ROLLING	24 ga. Steel	22 ga. Steel	20 ga. 18 ga. Steel	16 ga. Steel
	Alum. Grilles	Alum. Doors	Steel Grilles	
SQ. FT.	65	55	45	40

Model	HP	Volt/PH	Price
MGJ-50-11	1/2	115/1	\$700.00
MGJ-50-21	1/2	230/1	N/A
MGJ-50-23	1/2	230/3	\$795.00
MGJ-50-38	1/2	380/1	\$@@@.00
MGJ-50-43	1/2	460/3	\$@@@.00

MGJ 75 11	3/4 H.P.	115/1	\$@@@.00
-----------	----------	-------	----------

**Door Sprocket Substitutions:**

Sprocket Desc.	Add to list Price
<b>41B32 Sprocket,</b> 1" Bore, 1/4" Keyway, Standard for Rolling Doors.....	N/C
<b>41B32 Sprocket,</b> Non-std. bore and Keyway for rolling Doors .....	\$@@@
<b>41B30 Sprocket,</b> 1" Bore, 1/4" Keyway, Standard for Sectional Doors .....	N/C
Recommended for sectional doors .....	N/C
For all other sprocket recommendations .....	Consult Factory

**Options**

Desc.	Add to list Price
10 90951 Hood Mount Bracket (May Be Welded).....	\$@@
08 9098 Hood Mount Bracket (Cast).....	\$@@@

**Applications:**

The Model MGJ door operator is designed for use on industrial sectional doors with high or vertical lift and small rolling doors, shutters, and grilles. Maximum recommended duty cycle: 12 cycles per hour.

**Standard Features:**

- 3-button control station
- High starting torque motor with overload protection
- 24VAC control circuit
- Long-life dry type capacitor
- Industrial cross-the-line reversing starter (3phase only)
- Heavy-duty wormgear-in-oil-bath speed reducer
- Type C2 wiring standard, B2 easily field set by moving 1 jumper wire
- Prewired to accept sensing devices
- Fully adjustable linear driven limit switch mechanism
- Motor removable without affecting limit settings • NEMA 1 type electrical enclosure
- Floor level disconnect for emergency manual operation
- 41B32 door sprocket and #41 drive chain, included
- Baked-on high durability black powder coat finish

Side of Door	Hood Mount	Wall Mount
Left	MGJ-50-11-L	MGJ-50-11-R
Right	MGJ-50-11-R	MGJ-50-11-L

**MODEL MGJ  
Medium Duty  
Gearhead  
Reduced  
Operator**



MAXIMUM DOOR AREA (SQ. FT.)						
ROLLING	24 ga. Steel	22 ga. Steel	-	20 ga. 18 ga. Steel	16 ga. Steel	-
	Alum. Grilles	Alum. Doors	-	Steel Grilles	-	-
SECTIONAL	-	24 ga. 22 ga. Steel	20ga. Steel	-	16 ga. Steel	-
	Fiber Glass	Alum. Doors	Wood Doors	-	-	-
	-	-	24 ga. Steel Insul.	-	20 ga. Steel Insul.	16 ga. Steel Insul.
SQ. FT.	320	275	250	200	160	120

**NOTE:** On steel insulated doors, a 24 ga. back panel is a



**For Options See Page 67**

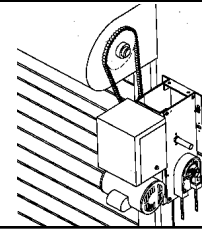
**We can help you  
select the best system.**

# HOIST OPERATORS

## Typical Installation

### Recommended

For sectional doors with high lift or full vertical lift type tracks or rolling steel type doors. Each operator is supplied with a hoist for easy operation during power failure from the floor. Please specify door height when ordering. Our hoist type operators will keep your doors operating smoothly & reliably throughout their operational life. Select from a full line of hoist operators to fill your applications needs. Uncertain which model is best for your application? Call our Toll Free number and let us help.



## MODEL MH Medium Duty Hoist Operator



MAXIMUM DOOR AREA (SQ. FT.)						
ROLLING	24 ga. Steel	22 ga. Steel	-	20 ga. 18 ga. Steel	16 ga. Steel	-
	Alum. Grilles	Alum. Doors	-	Steel Grilles	-	-
SECTIONAL	-	24 ga. 22 ga. Steel	20ga. Steel	-	16 ga. Steel	-
	Fiber Glass	Alum. Doors	Wood Doors	-	-	-
SQ. FT.	320	275	250	200	160	120

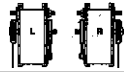
**NOTE:** On steel insulated doors, a 24 ga. back panel is assumed.

### Applications:

The Model MH door operator is designed for use on small rolling doors, grilles and industrial sectional doors with high or vertical lift. Maximum recommended duty cycle: 12 cycles per hour.

### Standard Features:

- Floor level chain hoist with electrical interlock for emergency manual door operation
- 3-button control station
- High-starting torque motor with overload protection
- Long-life dry-type capacitor
- Solenoid brake, standard
- Type C2 wiring standard, B2 easily field set by moving 1 jumper wire
- Prewired to accept sensing devices
- 24VAC control circuit
- Fully adjustable linear-driven limit mechanism
- Motor removable without affecting limit switch settings
- External radio control terminals
- NEMA 1 type electrical enclosure
- Adjustable friction clutch
- Efficient V-belt primary drive, chain/sprocket secondary
- Door speed approximately 8 to 9" /sec.



Please Note left or right hand hoist position at end of model #

## 2 Year Warranty



Model	HP	Volt/PH	Price
MH-50-11	1/2	115/1	\$515.00

### Door Sprocket Substitutions:

Sprocket Desc.	Add to list Price
<b>41B38 Sprocket,</b> 1" Bore, 1/4" Keyway, Standard for Sectional Doors .....	N/C
<b>41B32 Sprocket,</b> 1" Bore, 1/4" Keyway, Standard for Sectional Doors .....	N/C
Recommened for Sectional doors.....	N/C
For all other sprocket recommendations .....	Consult Factory

### Warning

This door operator is intended for use on vehicular doors. **MOTORIZED VEHICULAR DOORS CAN CAUSE SERIOUS INJURY OR DEATH!** Use entrapment protection equipment and other safety accessories on every door system

## MODEL H Industrial Duty Hoist Operator



MAXIMUM DOOR AREA (SQ. FT.)						
ROLLING	24 ga. Steel	22 ga. Steel	-	20 ga. 18 ga. Steel	16 ga. Steel	-
	Alum. Grilles	Alum. Doors	-	Steel Grilles	-	-
SECTIONAL	-	24 ga. 22 ga. Steel	20ga. Steel	-	16 ga. Steel	-
	Fiber Glass	Alum. Doors	Wood Doors	-	-	-
H.P.	310	285	260	210	175	125
1 1/4	400	350	320	280	250	200
1 1/2	560	500	450	380	325	250
2	640	625	560	475	400	310

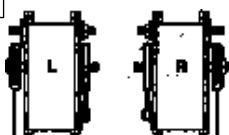
**NOTE:** On steel insulated doors, a 24 ga. back panel is assumed. If a heavier back panel is supplied, use the next higher H.P. rating. For doors 22 ft. wide by 20 ft. high and larger, call factory

### Applications:

The Model H continuous-duty door operator is designed for use on rolling doors and grilles and industrial sectional doors with high or vertical lift.

### Standard Features:

- Choice of 2 Control Circuits:
- Logic 3.0 Control Board (L3) Available on 115V, 208/230V, 460V and 575V
- Reversing Contactor Circuit (M) Features size 0 industrial linear contactor
- Floor level chain hoist with electrical interlock for emergency manual door operation
- High-starting torque continuous-duty motor with overload protection
- Heavy-duty 5L V-belt
- 3-button control station
- Industrial ball bearings on output shaft
- PosiLock® mechanical holding brake
- Type C2 wiring standard, B2 easily field set by moving 1 jumper wire or setting a switch
- Prewired to accept sensing devices
- External radio control terminals
- 24VAC control circuit (M), 5V DC (L3)
- Fully adjustable linear-driven limit mechanism
- Motor removable without affecting limit settings
- NEMA 1 type electrical enclosure
- Adjustable friction clutch
- Efficient V-belt primary drive, chain/sprocket secondary
- #50 drive chain
- Door speed approximately 8-9" /sec.



Please Note left or right hand hoist position at end of model number

For Options See Page 67

## 2 Year Warranty



Model	Volt/PH	Price
<b>1/3 H.P.</b>		
H-33-11 (L or M)	115/1	\$650.00
H-33-21 (L or M)	230/1	664.00
H-33-23 (L or M)	208/230/3	690.00
<b>1/2 H.P.</b>		
H-50-11 (L or M)	115/1	\$712.00
H-50-21 (L or M)	230/1	723.00
H-50-23 (L or M)	208/230/3	751.00
<b>3/4 H.P.</b>		
H-75-11 (L or M)	115/1	\$788.00
H-75-21 (L or M)	230/1	805.00
H-75-23 (L or M)	208/230/3	833.00

<b>1 H.P.</b>		
H-10-11 (L or M)	115/1	\$892.00
H-10-21 (L or M)	230/1	911.00
H-10-23 (L or M)	208/230/3	938.00

Please indicate Control Type:  
M= Mechanical Controls  
L= Logic Board

### Door Sprocket Substitutions:

Sprocket Desc.	Add to list Price
<b>50B40 Sprocket</b> 1" Bore, 1/4" Keyway, Standard for Sectional Doors .....	N/C
<b>50B18 Sprocket</b> 1" Bore, 1/4" Keyway, Standard for Sectional Doors .....	N/C
Recommened for sectional doors.....	N/C
For all other Sprocket recommendations .....	Consult Factory



**2 Year Warranty**



**Applications:**

The Model GH continuous-duty door operator is designed for use on rolling doors, grilles, and industrial sectional doors with vertical or high lift..

**Model Volt/PH Price**

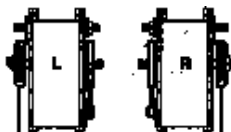
Model	Volt/PH	Price
<b>1/2 H.P.</b>		
GH-50-11 (L or M)	115/1	\$980.00
GH-50-21 (L or M)	230/1	999.00
GH-50-23 (L or M)	208/230 3	1016.00
<b>3/4 H.P.</b>		
GH-75-11 (L or M)	115/1	\$1038.00
GH-75-21 (L or M)	230/1	1057.00
GH-75-23 (L or M)	208/230/3	1073.00
<b>1 H.P.</b>		
GH-10-11 (L or M)	115/1	\$1101.00
GH-10-21 (L or M)	230/1	1121.00
GH-10-23 (L or M)	208/230/3	1137.00
<b>1-1/2 H.P.</b>		
GH-15-11 (L or M)	115/1	\$1224.00
GH-15-21 (L or M)	230/1	1238.00
GH-15-23 (L or M)	208/230 3	1272.00
<b>2 H.P.</b>		
GH-20-23 (L or M)	208/230/3	\$1464.00
<b>3 H.P.</b>		
GH-30-23 (L or M)	208/230/3	\$2882.00
<b>5 H.P.</b>		
GH-5HP-23 (L or M)	208/230/3	\$CALL

Please indicate Control Type:  
M= Mechanical Controls  
L= Logic Board

**Standard Features**

- Choice of 2 Control Circuits:
- Logic 3.0 Control Board (L3) Available for 115V, 208/230V, 460V and 575V
- Reversing Contactor Circuit (M) Features size 0 industrial linear contactor
- Floor level chain hoist with electrical interlock for emergency manual door operation
- High-starting torque continuous-duty motor with overload protection
- Heavy-duty wormgear-in-oil-bath speed reducer
- 3-button control station
- Hoist wheel is easily moved to Right or Left hand side of unit, eliminating the need to order left or right hand mounting
- Solenoid brake, standard
- 24VAC control circuit (M), 5V DC (L3)
- Type C2 wiring standard, B2 easily field set by moving 1 jumper wire or setting a switch
- Prewired to accept sensing devices (see Sensing Devices – Safety Accessories)
- External radio control terminals
- Fully adjustable linear-driven limit mechanism
- Motor removable without affecting limit settings
- NEMA 1 type electrical enclosure
- 50B40 door sprocket and #50 drive chain – standard on 1/2 thru 1 HP models
- 50B60 door sprocket and #50 drive chain – standard on 1-1/2 and 2 HP models 80B60 1 3/4" diameter with 3/8" keyway door sprocket and #80 drive chain – standard on 3 HP models
- Baked-on high-durability black powdercoat finish
- Door speed approximately 8 to 9 inches per second

**Please note left or right hand hoist position at end of model number**



**For Options See Page 67**

**MODEL GH Heavy Industrial Duty Gear Reduced Operator**



<b>MAXIMUM DOOR AREA (SQ. FT.)</b>						
<b>ROLLING</b>	24 ga. Steel	22 ga. Steel	–	20 ga. 18 ga. Steel	16 ga. Steel	–
	Alum. Grilles	Alum. Doors	–	Steel Grilles	–	–
<b>SECTIONAL</b>	–	24 ga. 22 ga. Steel	20ga. Steel	–	16 ga. Steel	–
	Fiber Glass	Alum. Doors	Wood Doors	–	–	–
<b>1</b>	–	–	24 ga. Steel Insul.	–	20 ga. Steel Insul.	16 ga. Steel Insul.
	325	300	275	250	225	175
<b>1 1/2</b>	480	430	390	340	275	225
	650	560	500	430	325	300
<b>2</b>	–	–	680	540	425	375
	–	–	–	640	560	460
<b>3</b>	–	–	–	875	840	620
	<b>Consult factory</b>					

**NOTE:** On steel insulated doors, a 24 ga. back panel is assumed. If a heavier back panel is supplied, use the next higher H.P. rating. For doors 22 ft. wide by 20 ft. high and larger, call factory

**Door Sprocket Substitutions:**

**Sprocket Desc. Add to list Price**

**50B60 Sprocket**  
(Specify bore & keyway)  
in lieu of 50B40.....\$37.00  
For all other sprocket recommendations.....Consult Factory  
Sectional Sprockets are Available Consult Factory



# AIR-POWERED OPERATORS

## Recommended

For use on sectional type doors with standard, high lift or vertical lift track. Excellent for areas that have high frequency use and/or applications that are wet, corrosive, or have excess dirt, debris or contamination. Choose from a jackshaft or trolley/drawbar style to meet your specific doors' needs.

Our air-powered operators are designed for the ultimate in durability, reliability and smooth operation in the most demanding environments.

Call us today and let us help you design the best configuration for your application.



## Air-Powered Operators



Designed for maximum performance, the Supralift™ uses existing air supply (40-90 p.s.i.) for fast reliable operation of your door system.

## BENEFITS

### Complete Corrosion Resistance

All aluminum cylinder, piston and end cap design, coupled with the most corrosion resistant materials available, provides maximum life in the world's toughest applications.

### Reliable Performance

Engineered for continual use in harsh environments. Supralift™ provides your door with dependable, trouble-free operation cycle after cycle.

### Fast

Supralift™ cycles door 3 times faster than electric openers decreasing cycle time and energy costs. Opener accelerates and decelerates at the beginning and end of each cycle providing smooth operation of your door.

### Long Life

Supralift™ operators are designed and rated for millions of cycles ensuring years of reliable operation in high use areas.

### Low Maintenance

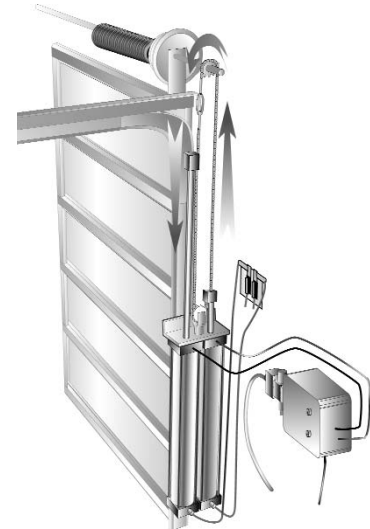
Enhanced design minimizes routine maintenance and periodic service, resulting in lower annual repair and service costs for you.

### Safe

Supralift™ offers instant reverse at the control box and can be stopped by hand. Safety options also include photoeyes, loop detector and bottom edges for safety reverse.

## FEATURES

- Lubrication Free Piston Cylinders
- Flow Control Kit
- Stainless Steel Mounting Brackets
- Quick Connect Push Fittings
- Posi-Lock Chain Collar
- Nickel Chain
- Aluminum Turnbuckle
- Stainless Steel Sprocket



All operators are listed for the height of the door they are designed to open and include; nickel chain, chain turnbuckle, shaft sprocket and mounting hardware. The unit is ready for installation to your door system. 3/8" polyflow airline is not included. (See installation kits under options) You must order your controls and buttons separately from the air-operators control boxes section.

Part #	Description	Price
SL2-08	8' High Door Opener	\$ 1370.00
SL2-10	10' High Door Opener	\$ 1470.00
SL2-12	12' High Door Opener	\$ 1950.00
SL2-14	14' High Door Opener	\$ 2075.00
SL2-16	16' High Door Opener	\$ 2200.00
SL2-D0	Dual Operators (For Large or Heavy Doors)	Varies By Size



## Flow Control Kits

Eliminates cable spooling common when a door reverses direction when in motion. Provides smoother operation and easier adjustment. Installed away from the cold doorway and undercarriage spray. Minimizes moisture intake problems and freeze-ups.



## Waterproof Chain

### Upgrade for Supralift II's

For use in harsh environments, our waterproof chain option is an excellent choice for areas such as wash bays and/or other high moisture and corrosive areas.

Part #	Description	List Price
SLWP08	Waterproof Chain 8' Opener	\$20.00
SLWP10	Waterproof Chain 10' Opener	\$24.00
SLWP12	Waterproof Chain 12' Opener	\$28.00



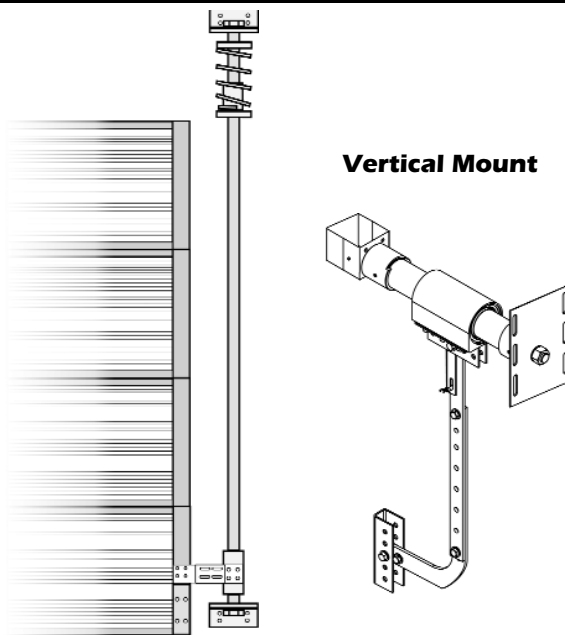
# AIR-POWERED OPERATORS



- Direct Drive • Field Serviceable • Low Maintenance
- Fast, Safe Operation • Smooth Reliable Operation
- Economical • Horizontal or Vertical Mount
- Easy To Install

## Designed Specifically for Your Wet, Corrosive and High Use Environment...

Designed with your tough environment in mind, NuMax™ Magnetically coupled Air-Powered Door Operators are ideal for applications where dependability, reliability and durability are absolutely critical for a profitable and trouble-free operation. Versatile enough to meet your particular door systems needs, NuMax™ can be installed horizontally or vertically to fit any standard or custom requirement.

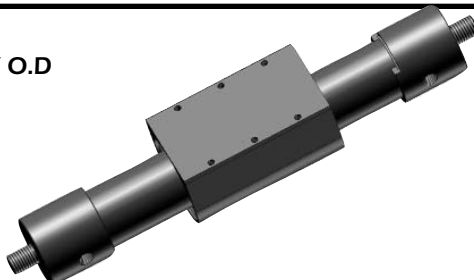


Vertical Mount

Horizontal Mount

## FEATURES

- True 2" Diameter Bore Size- 2-1/4" O.D
- 1/8" Cylinder Wall Thickness
- Adjustable 3" Internal Cushions
- Aluminum Trolley Slide
- Exhaust Only Design- No Moisture Intake
- Stainless Steel Hardware



- Stainless Steel Arm Assembly
- Adjustable Cushioning Spring Assembly
- Pre-Assembled Flow Control Kit
- 3/8" NPT Porting
- Quick Dump Exhaust
- Fully Field Repairable
- 36 Month Warranty

### Horizontal Mount

The best choice for doors with standard lift or smaller amounts of highlift track (under 6") , the NuMax horizontal mount is installed above the door where it is warmer, drier and well-protected from interior and exterior elements.

The NuMax attaches directly to the door with rust-proof stainless steel arm, trolley and door connection mounting brackets (Included).

### Vertical Mount

Choose our vertical mount Numax for doors with high lift or full vertical lift. The Numax Vertical mount is installed alongside the door and connects directly to your door's bottom section.

Fully adjustable stainless steel mounting brackets gives you the versatility to meet a multitude of installation situations (Included). All operators are listed for the height of the door they are designed to open.

Part #	Description	Price/ea.
NMH08	8' NuMax, Horizontal Mount	\$ 2166.00
NMH10	10' NuMax, Horizontal Mount	\$ 2320.00
NMH12	12' NuMax, Horizontal Mount	\$ 2420.00
NMH14	14' NuMax, Horizontal Mount	\$ 2560.00
NMH16	16' NuMax, Horizontal Mount	\$ 2700.00

Part #	Description	Price/ea.
NMV08	8' NuMax, Vertical Mount	\$ 2100.00
NMV10	10' NuMax, Vertical Mount	\$ 2200.00
NMV12	12' NuMax, Vertical Mount	\$ 2300.00
NMV14	14' NuMax, Vertical Mount	\$ 2400.00
NMV16	16' NuMax, Vertical Mount	\$ 2500.00

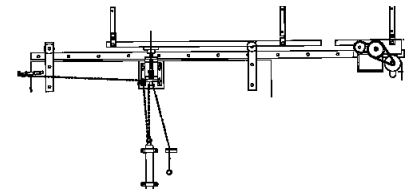
These units are ready for installation to your door system. 3/8" polyflow airline is not included. (See installation kits under options) You must order your controls and buttons separately from the air-operators control boxes section.



# SLIDING DOOR OPERATORS

## Recommended

For use with sliding wood, steel or aluminum sliding doors and fire doors. Choose from our standard models for your application. Can't decide on a model for your application? Let us help by calling us at our Toll Free number.



Model	Volt/PH	Price
<b>1/3 H.P.</b>		
SD-33-11 (L or M)	115/1	\$1366.00
SD-33-21 (L or M)	230/1	\$1366.00
SD-33-23 (L or M)	208/230/3	\$1393.00
<b>1/2 H.P.</b>		
SD-50-11 (L or M)	115/1	\$1447.00
SD-50-21 (L or M)	230/1	\$1447.00
SD-50-23 (L or M)	208/230/3	\$1476.00
<b>3/4 H.P.</b>		
SD-75-11 (L or M)	115/1	\$1529.00
SD-75-21 (L or M)	230/1	\$1529.00
SD-75-23 (L or M)	208/230/3	\$1557.00
<b>1 H.P.</b>		
SD-10-11 (L or M)	115/1	\$1567.00
SD-10-21 (L or M)	230/1	\$1567.00
SD-10-23 (L or M)	208/230/3	\$1595.00

Please indicate Control Type:  
M= Mechanical Controls  
L= Logic Board

### Additional Track - Required for track wider than 12 ft. **Add to List Price**

For doors up to 14 feet	\$18.00
For doors up to 16 feet	\$36.00
For doors up to 18 feet	\$54.00
For doors up to 20 feet	\$72.00
For doors up to 24 feet	\$90.00

### Applications:

The Model SD door operator is designed for use on single and bi-parting slide doors and fire doors.

### Standard Features:

- High starting torque continuous-duty motor with overload protection
- Heavy-duty V-belt
- 3-button control station
- Industrial ball bearings on the output shaft
- Solenoid brake, standard
- Type C2 wiring standard, B2 easily field set by moving 1 jumper wire or setting a switch
- Prewired to accept sensing devices
- External radio control terminals
- 24VAC control circuit.
- Fully adjustable linear driven limit mechanism
- Efficient V-belt primary drive, chain/sprocket secondary
- Motor removable without affecting limit settings
- NEMA 1 type electrical enclosure
- Adjustable friction clutch
- Emergency disconnect for manual operation
- Trolley track for doors up to 12' wide standard
- Quiet gliding rail spacers
- #41 roller chain drive
- Heavy-duty hanger brackets
- Baked-on high durability black powder coat finish
- Door speed approximately 11 inches per second

## MODEL SD Industrial Duty Slide Door Operator



**2 Year  
Warranty**

Door Size Selection Guide		
H.P.	Maximum Door weight (lbs.)	Maximum Door Area (Sq.Ft.)
1/3	750	180
1/2	1300	260
3/4	1850	340
1	2400	480

### Note:

For bi-parting doors, total weight and total area of both doors combined must be considered. Specify door widths when ordering.

**For Bi-Parting Doors,  
See page 67 for options**

**2 Year  
Warranty**



### Applications:

The Model GSD door operator is designed for use on heavy single and bi-parting slide doors and fire doors.

### Additional Features:

- Heavy-duty worm gear-in-oil-bath speed reducer
- Approximate shipping weight - 180 lbs.

Model	Volt/PH	Price
<b>1/2 H.P.</b>		
GSD-50-11 (L or M)	115 /1	\$2210.00
GSD-50-21 (L or M)	230 /1	\$2210.00
GSD-50-23 (L or M)	208/230 /3	\$2262.00
<b>3/4 H.P.</b>		
GSD-75-11 (L or M)	115 /1	\$2324.00
GSD-75-21 (L or M)	230 /1	\$2324.00
GSD-75-23 (L or M)	208/230 /3	\$2374.00
<b>1 H.P.</b>		
GSD-10-11 (L or M)	115 /1	\$2466.00
GSD-10-21 (L or M)	230 /1	\$2466.00
GSD-10-23 (L or M)	208/230 /3	\$2517.00

**For Bi-Parting Doors,  
See page 67 for options**

**Warning:** This door operator is intended for use on vehicular doors. **MOTORIZED VEHICULAR DOORS CAN CAUSE SERIOUS INJURY OR DEATH!** Use entrapment protection equipment and other safety accessories on every door system.

Model	Volt/PH	Price
<b>1-1/2 H.P.</b>		
GSD-15-11 (L or M)	115 /1	\$2620.00
GSD-15-21 (L or M)	230 /1	\$2620.00
GSD-15-23 (L or M)	208/230	\$2671.00

Please indicate Control Type:  
M= Mechanical Controls  
L= Logic Board

### Additional Track -

Required for track wider than 12 ft.

<b>Add to List Price</b>	
For doors up to 14 feet	\$18.00
For doors up to 16 feet	\$36.00
For doors up to 18 feet	\$54.00
For doors up to 20 feet	\$72.00
For doors up to 24 feet	\$90.00
For bi parting doors.	

## MODEL GSD Heavy Industrial Duty Slide Door Operator



Door Size Selection Guide		
H.P.	Maximum Door weight (lbs.)	Maximum Door Area (Sq.Ft.)
1/2	1400	300
3/4	2200	420
1	2800	520
1-1/2	3400	620

### Note:

For bi-parting doors, total weight and total area of both doors combined must be considered. Specify door widths when ordering.

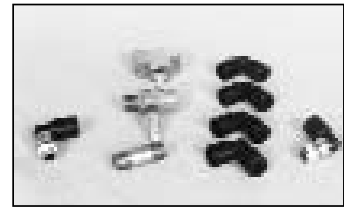
# AIR-POWERED OPERATORS - OPTIONS



## Inline Dryer

Keep your airlines clean and dry by removing moisture from your system. Our top quality dryers offer 99% efficiency even in tough, extreme conditions!

Part #	Description	List Price
ILD10-14	Inline Dryer, 1/4" NPT, 25scfm (1 Door)	\$ 150.00
ILD20-38	Inline Dryer, 3/8" NPT, 50scfm (2 Door)	\$ 290.00
ILD40-34	Inline Dryer, 3/4" NPT, 100scfm (4 Door)	\$ 375.00
ILD60-1	Inline Dryer, 1" NPT, 120scfm (6 Door)	\$ 375.00
ILD80-1	Inline Dryer, 1" NPT, 170scfm (8 Door)	\$ 375.00



## Install Kits

Decrease your installation time with our pre-packaged installation kits. Each kit includes components normally required to complete plumbing & wiring of your air-powered opener to the air compressor and from the opener cylinders to the control box.

Part #	Description	List Price
SLK10	Install Kit Includes: 100'- 3/8" Polyflow Air Line, 50'- 4 Wire Thermostat Wire, 3/8" Nipple, 3/8" Shut-off Valve, 3-Way T, 4- 3/8" Union Elbows, 2- 3/8" x 3/8" Swivel Elbows	\$ 110.00

## Timers

Time your door opening or closing functions with our built-in timer. (Selectable from 5-180 seconds)

Part #	Description	List Price
UPG-MTIMER	Add to Control Boxes for Built-in Timer. Includes 11 pin socket wired and mounted in control box.	\$ 130.00



## Air-Opener Control Box Prices

All air-powered openers require a control box with a valve and filter regulator. These control boxes are designed for use with both Supralift II™ and Numax™ Operators.

Air-Powered Operators. All include a filter regulator and fittings for a 3/8" polyflow line installation.

Our control boxes allow for a variety of control accessories including push button stations, timers, photoeyes, loop detectors, and other devices. **Easy to use double terminal strip makes wiring of accessories a breeze!** Plug in power source requires no hard-wiring. All push buttons are double-sealed and waterproof.



### Standard Waterproof Control Box

- NEMA 4 Enclosure
- 2 Position Automatic Valve
- Lifetime Warranty on Coils
- Open, Close and Stop Pushbuttons
- 24 Volt Control Circuit
- Regulator with Gauge and Drain
- Manual Shut-Off Valve

### FILTER/REGULATOR

#### Filtering System

Features improved contaminant filter with automatic water drain for maximum life and reduced maintenance of the entire system.

#### Regulator

Integrated adjustable regulator allows for easy adjustment of primary air flow into system.

#### Shut-off Valve

Allows quick shut down at valve box, Relieves downstream air pressure for installation or service of the operator- Also used for manual operation of door system.

### VALVE

#### High Quality Valve

High quality valve provides long life and minimal maintenance. Valve requires no lubrication eliminating expensive oiler and exposure to oil attracted contaminants. New Z-Type O-ring allows for even wear on all surfaces increasing service life and less maintenance.



SLE10-24

### Emergency Open Waterproof Control Box

Includes Standard Waterproof Control Box features with Emergency Open Push Button Valve for operation of opener upon power failure.

- Ideal Size
- Double Sealed Push Buttons
- Double Terminal Strip

State-of-the-art; NEMA-4 Watertight Control box allows convenient operation with a variety of signaling options including: photoeyes, loop detectors, timers, emergency open button as well as other devices.

Part #	Description	List Price
SLE10-24	Standard Control Box- 24V (with 2 position up-down buttons mounted in box)	\$ 510.00
SLE10-15	Standard Control Box - 115V (with 2 position up-down buttons mounted in box)	\$ 545.00
SLE20-24	Emergency Open - 24V Waterproof Control Box (with 2 position up-down buttons mounted in box and emergency open)	\$ 555.00
SLE20-15	Emergency Open - 115V Waterproof Control Box (with 2 position up-down buttons mounted in box and emergency open)	\$ 640.00

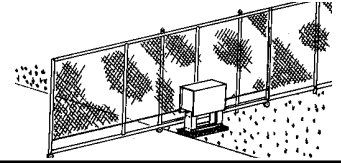
SLE20-24

**Other Control Boxes Available with: Thermostats, Timers, Counters, Relays, etc. Please call us for pricing and availability.**

# SLIDE GATE OPERATORS

## Recommended

For use with sliding commercial or industrial gate types. Choose from our standard models for your application. Can't decide on a model for your application? Let us help by calling our Toll Free Number.



## MODEL SL 575 Heavy Duty Slide Gate Operator



### Applications:

This heavy-duty design supports gate lengths up to 50 ft. and gate weights up to 1,800 lbs. Powder coated weather resistant steel enclosure and a high-starting torque motor with built-in overload protection ensure strong, dependable performance. This model is UL325-compliant for Class I, II, III and IV.

### Features:

- Built-in Radio Receiver
- GL Logic Control Board
- Interrupt & Exit Loop Inputs
- 24VAC Accessory Power Output
- UL325-Compliant Entrapment Alarm with External Reset
- Adjustable Inherent Entrapment Protection System
- Full Systems Capability – Compatible with most access control devices and safety accessories
- Timer-to-Close (0-180 seconds)
- Integrated Maglock Control
- Industrial-Size 0 Across-the-Line Magnetic Reversing Contactor
- Selectable Gate Movement Warning Alarm
- Supports Optional Plug-in Loop Detectors mechanical features:
  - Gate Speed of 10 Inches per Second
  - Fully Adjustable Driven Limit System
  - Automatic Braking System
  - Standard Manual Release System
  - Pad and Post Mount Standard
- Supplied with 25 Feet of #50 Nickel-Plated Chain
- Efficient Chain and Sprocket Gear Reduction
- Adjustable Friction Clutch System
- Heavy-Duty Shaft Bearings
- Padlockable Weather-Resistant Lockable Cover

Model	Volt/PH	Price
<b>1/2 H.P.</b>		
SL-575-50-11-S3	115/1	1814.00
SL-575-50-21-S3	230/1	1884.00
SL-575-50-23-S3	230/3	1884.00
<b>1H.P.</b>		
SL-575-100-11-S3	115/1	2295.00
SL-575-100-21-S3	230/1	2295.00
SL-575-100-23-S3	230/3	2295.00

### Additional Roller Chain

Part No.	Add To List Price
65-3040	#40 nickel-plated chain for 1/3 and 1/2 HP models @@@.00/ft.
65-3050	#50 nickel-plated chain for 3/4 HP models @@@.00/ft.

### Factory installed heater

Thermostatically controlled fin heater modification, use suffix H3

(Sample: SL 575 50 11 H3)

65 32449	(115V & 575V) List Price Upcharge \$315.00
65 32448	(208V - 460V) List Price Upcharge \$322.00

### GATE SIZE SELECTION CHART

#### RECOMMENDED CAPACITIES

HP	MAX CANT'L WIDTH (FT.)	MAX O/H WIDTH (FT.)	MAX GATE WT.(LBS)	MAX CYCLES
1/2	25	26	900	30
3/4	30	36	1200	30
1	35	48	1800	30

## MODEL SL 585 Heavy Duty Slide Gear Operator



### Applications:

The SL 580 Series Gate Operators Are Designed For Use On Commercial And Industrial Cantilever, Rolling, Or Overhead Slide Gates.

### Features

- Built-in Radio Receiver
- GL Logic Control Board
- Interrupt & Exit Loop Inputs
- 24VAC Accessory Power Output
- UL325-Compliant Entrapment Alarm w/External Reset
- Adjustable Inherent Entrapment Protection System
- Full Systems Capability – Compatible with most access-control devices and safety accessories
- Timer-to-Close (0-180 seconds)
- Integrated Maglock Control
- Industrial-Size 0 Across-the-Line Magnetic Reversing Contactor
- High-Starting Torque, Continuous-Duty Industrial Motor with Overload Protection
- Selectable Gate Movement Warning Alarm
- Supports Optional Plug-in Loop Detectors mechanical features:
  - Heavy-Duty Wormgear-in-Oil Gear Reducer
  - Gate Speed of 11 Inches per Second
  - Fully Adjustable Driven Limit System
  - Automatic Braking System
  - Standard Manual Release System
  - Pad and Post Mount Standard
- Supplied with 25 Feet of #50 Nickel-Plated Chain
- Adjustable Friction Clutch System
- Heavy-Duty Shaft Bearings
- Padlockable Weather-Resistant Lockable Cover

Model	Volt/PH	Price
<b>1/2 H.P.</b>		
SL-585-50-11-S3	115/1	2167.00
SL-585-50-21-S3	230/1	2167.00
SL-580-50-23-S3	230/3	2167.00
<b>1 H.P.</b>		
SL-585-100-11-S3	115/1	2450.00
SL-585-100-21-S3	230/1	2450.00
SL-585-100-23-S3	230/3	2450.00
<b>1-1/2 H.P.</b>		
SL-585-150-11-S3	115/1	2579.00

### GATE SIZE SELECTION CHART

#### RECOMMENDED CAPACITIES

HP	MAX CANT'L WIDTH (FT.)	MAX O/H WIDTH (FT.)	MAX GATE WT.(LBS)	MAX CYCLES
1/2	25	45	1000	20
1	35	70	1600	20
1-1/2	40	80	1900	20

Part No.	ADDITIONAL ROLLER CHAIN	Add To List Price
65-3050	#50 nickel-plated chain	.....5.00/ft.

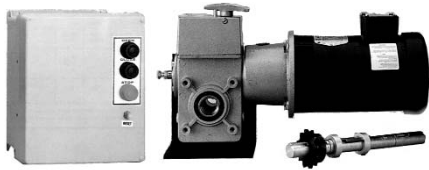
Part No.	DIAGONAL SUPPORT BRACES	Add To List Price
65-3509	Recommended on heavy-duty applications (std. on 1-1/2 Hp)	.....40.00

**Warning:** This door operator is intended for use on vehicular doors. **MOTORIZED VEHICULAR DOORS CAN CAUSE SERIOUS INJURY OR DEATH!** Use entrapment protection equipment and other safety accessories on every door system

For options see page 67

# HIGH MOISTURE OPERATORS

## MODEL EGJ Direct Drive Electric High Moisture Operator



**GEAR BOX REDUCED!**

EJG Series direct drive operators are the perfect fit for carwash or other harsh environments. Direct Drive equates to less working parts and more reliability. Includes watertight electrical enclosure and NEMA 4 batteries mounted in NEMA 4 24V control circuit box. Dynamic Brake included.

### Applications:

The Model EGJ continuous-duty door operator is designed for use in damp environments where direct spray is not present.

### Features

- Continuous-duty, TEFC high-starting torque motor with instant reverse and overload protection
- Available in 1/2 HP (375W); single phase. Capacitor start and 3-phase motors. Removable without affecting limit switch settings.
- 45:1 sealed gear reducer with internal clutch system. "Through-Shaft" reducer design allows operator to be directly mounted onto the 1" torsion shaft of sectional doors, for an approximate door speed of 12"/second. Optional reduction shaft is required for use on rolling doors or sectional door to provide an approximate door speed of 8-9"/second.
- Easy manual operation upon activation of the floor level disconnect
- C2 wiring is standard; B2 is easily selected, providing momentary contact to OPEN/CLOSE and STOP with open override. The operator is prewired to accept a sensing edge, photoelectric sensors, radio controls and most types of access control equipment.
- Across-the-line type, size "0" contactor motor switching, mechanically interlocked (NEMA 4 enclosure)
- Dynamic brake assures stopping of the door in damp environments
- High-cycle sealed ball bearings on the gear reducer
- Adjustable friction clutch helps protect against damage to the door and operator should the door meet an obstruction
- 3-button station for OPEN/CLOSE and STOP functions is incorporated into the wall-mounted NEMA 4 electrical enclosure. Additional NEMA 4 controls with 1, 2 or 3 buttons are available.
- NEMA 4 type wall-mounted starter and TEFC motor
- 24V NEC Class 2 control circuit

- **High Cycle Capacity**
- **Compact Design**
- **No Chains or Sprockets**
- **Handles Tough Applications**

### Optional Features

Optional reduction shaft is required for use on rolling doors or sectional door to provide an appropriate door speed of 8-9"/second.

Model	Volt/PH	Price
	<b>1/2 H.P.</b>	
EGJ-50-11	115/1	1426.00
EGJ-50-21	230/1	1447.00
EGJ-50-23	230/3	1466.00

### Optional Equipment

Part No.	Add To List Price
71-13716	Reduction Shaft (Requires sprocket & Chain) @.00
65-3050	Operator Cover @.00

MAXIMUM DOOR AREA (SQ. FT.)						
ROLLING	24 ga. Steel	22 ga. Steel	—	20 ga. 18 ga. Steel	16 ga. Steel	—
	Alum. Grilles	Alum. Doors	—	Steel Grilles	—	—
SECTIONAL	—	24 ga. 22 ga. Steel	20 ga. Steel	—	16 ga. Steel	—
	Fiber Glass	Alum. Doors	Wood Doors	—	—	—
	—	—	24 ga. Steel Insul.	—	20 ga. Steel Insul.	16 ga. Steel Insul.
SQ. FT.	325	300	275	250	225	175

**NOTE:** On steel insulated doors, a 24 ga. back panel is assumed.

**Warning:** This door operator is intended for use on vehicular doors. **MOTORIZED VEHICULAR DOORS CAN CAUSE SERIOUS INJURY OR DEATH!** Use entrapment protection equipment and other safety accessories on every door system

## Electric Car Wash Openers



Modified for car wash applications, these electric openers feature a watertight electrical enclosure, totally enclosed fan cooled motor, nickel plated roller chain and NEMA-4X watertight, three button control station with Open, Close and Stop.

### Drawbar Trolley Type

Part #	Volts/Ph	HP.	List Price
CT-33-11-M	115/1	1/3	\$ 1109.00
CT-33-21-M	208/230/1	1/3	\$ 1121.00
CT-50-11-M	115/1	1/2	\$ 1144.00
CT-50-21-M	230/1	1/2	\$ 1163.00
CT-75-11-M	115/1	3/4	\$ 1260.00
CT-75-21-M	208/230/1	3/4	\$ 1277.00
CT-75-23-M	208/230/3	3/4	\$ 1312.00
Built in Timer to Close (Logic Only)			N/C

Additional Track for doors over 12' high add \$ 18.00/2 ft.

### Jackshaft Type

Part #	Volts/Ph	HP.	List Price
CJ-33-11-M	115/1	1/3	\$ 1170.00
CJ-33-21-M	208/230/1	1/3	\$ 1187.00
CJ-50-11-M	115/1	1/2	\$ 1229.00
CJ-50-21-M	230/1	1/2	\$ 1242.00
CJ-75-11-M	115/1	3/4	\$ 1279.00
CJ-75-21-M	208/230/1	3/4	\$ 1293.00
CJ-75-23-M	208/230/3	3/4	\$ 1331.00
Built in Timer to Close (Logic Only)			N/C

# SLIDE GATE OPERATORS

Model	Volt/PH	Price
<b>1/2 H.P.</b>		
SL-595-50-11-S3	115/1	2716.00
SL-595-50-21-S3	230/1	2716.00
SL-595-50-83-S3	208/3	2716.00
SL-595-50-23-S3	230/3	2716.00
<b>1 H.P.</b>		
SL-595-100-11-S3	115/1	2999.00
SL-595-100-21-S3	230/1	2999.00
SL-595-100-83-S3	208/3	2999.00
SL-595-100-23-S3	230/3	2999.00
<b>1-1/2 H.P.</b>		
SL-595-150-11-S3	115/1	3136.00
SL-595-150-21-S3	230/1	3136.00
SL-595-150-83-S3	208/3	3136.00
SL-595-150-23-S3	230/3	3136.00
<b>2 H.P.</b>		
SL-595-200-83-S3	208/3	3273.00
SL-595-200-23-S3	230/3	3273.00

### ADDITIONAL ROLLER CHAIN

Part No.		Add To List Price
65-3050	#50 nickel-plated chain	5.00/ft.



### Applications:

The extremely powerful design supports gate lengths up to 90 ft. and gate weights up to 2,500 lbs. Fully enclosed NEMA 3R oil tight, weatherproof lockable cabinet and a high-starting continuous-duty torque motor with built-in overload protection ensure rugged and reliable performance. This model is UL325-compliant for Class I, II, III and IV.

### Features

- Built-in Radio Receiver • GL Logic Control Board
- Interrupt & Exit Loop Inputs
- 24VAC Accessory Power Output
- UL325-Compliant Entrapment Alarm with Ext Reset
- Adjustable Inherent Entrapment Protection System
- Full Systems Capability – Compatible with most access control devices and safety accessories
- Timer-to-Close (0-180 seconds)
- Integrated Maglock Control
- Industrial-Size 0 Across-the-Line Magnetic Reversing Contactor
- High-Starting Torque, Continuous-Duty Industrial Motor with Overload Protection
- Selectable Gate Movement Warning Alarm
- Supports Optional Plug-in Loop Detectors
- Heavy-Duty Wormgear-in-Oil Gear Reducer
- Gate Speed of 12 Inches per Second
- Fully Adjustable Driven Limit System
- Automatic Braking System
- Standard Manual Release System
- Supplied with 25 Feet of #50 Nickel-Plated Chain
- Adjustable Friction Clutch System
- UL325 Class I, II, III, IV Listed, CSA Certified.

## MODEL SL 595

### Heavy Industrial Duty Slide Gate Operator



### GATE SIZE SELECTION CHART

RECOMMENDED CAPACITIES				
HP	MAX CANT'L WIDTH (FT.)	MAX O/H WIDTH (FT.)	MAX GATE WT.(LBS)	MAX CYCLES
1/2	25	45	1100	25
3/4	30	60	1400	25
1	35	70	1700	25
1-1/2	40	80	2100	25
2	45	90	2500	25

Model	Volt/PH	Price
<b>1 HP VOLTS/PH PRICE</b>		
HS-670 100 11 C3	115/1	\$6096.00
HS-670 100 11 I3	115/1	\$6096.00
HS-670 100 21 C3	230/1	\$6096.00
HS-670 100 21 I3	230/1	\$6096.00
HS-670 100 23 C3	230/3	\$6096.00
HS-670 100 23 I3	230/3	\$6096.00
HS-670 100 83 C3	208/3	\$6096.00
HS-670 100 83 I3	208/3	\$6096.00
<b>2 HP</b>		
HS-670 200 23 I3	230/3	\$7036.00
HS-670 200 83 I3	208/3	\$7036.00

### Additional Roller Chain

Part No.		Add To List Price
G65-3040	#40 nickel-plated chain for 1/3 and 1/2 HP models	4.00/ft.
G65-3050	#50 nickel-plated chain for 3/4 HP models	5.00/ft.

For options see page 67



### Applications:

The heavy-duty design supports gate lengths up to 80 ft. and gate weights up to 5,000 lbs. Powder coated weatherresistant steel enclosure and a continuous-duty industrial hydraulic motor ensure strong, dependable performance. This model is UL-325 compliant for Class I, II, III and IV.

### Features

- Built-in Radio Receiver
- 24VAC Accessory Power Output
- Full Systems Capability – Compatible with most access control devices and safety accessories
- Adjustable Inherent Obstruction Sensing
- Timer-to-Close (0-180 seconds)
- Industrial Reversing Contactor
- Continuous-Duty Industrial Hydraulic Motor
- Integrated Maglock Control
- UL325-Compliant Entrapment Alarm
- Exit Interrupt Loop Detector Inputs
- Maximum Run Timer (120 seconds)
- Long-Distance Digital Logic Control (supports runs over 1000 feet)
- Supports Optional Plug-in Loop Detectors mechanical features:
- Gate Speed of 18 Inches per Second (I3)
- Gate Speed of 12 Inches per Second (C3)
- Fully Adjustable Driven Limit System
- Standard Manual Release System
- Baked-on High-Durability Powder coat Finish
- Pad Mount
- Hydraulic Braking System
- Optional features:**
- Plug-in Loop Detector
- Drive Rail (additional lengths)
- Rail Clamp

## MODEL HS670

### Hydraulic Slide Gate Operator



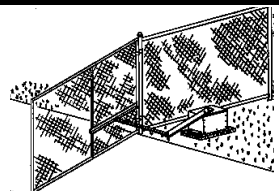
### GATE SIZE SELECTION GUIDE

RECOMMENDED CAPACITIES			
HP	MAX GATE WT. (LBS.)	MAX GATE WIDTH (FT.)	MAX CYCLES
1	3000	80	Cont. Duty
2	5000	80	Cont. Duty

# SWING GATE OPERATORS

## Recommended

For use with Sliding commercial and industrial swing type gates. Choose from our standard models for your application. Can't decide on a model for your application? Let us help by calling us at our Toll Free number.



## MODEL SW 470 Medium Duty Swing Gate Operator



### GATE SIZE SELECTION GUIDE

RECOMMENDED CAPACITIES			
HP	MAX GATE WT. (LBS.)	MAX GATE WIDTH (FT.)	MAX CYCLES/HR
1/2	500	12	10



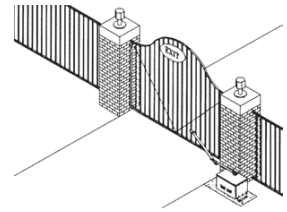
### Applications:

This design supports gate lengths up to 12 ft. and gate weights up to 500 lbs. Utilizing a weather-resistant, powder coated steel enclosure, a wormgear reducing drive and high-starting torque motor offers you years of reliable and powerful performance. This model is UL325-compliant for Class I, II, III and IV.

### Features

- Built-in Radio Receiver
- GL Logic Control Board
- UL325-Compliant Entrapment Alarm
- Shadow, Interrupt & Exit Loop Inputs
- 24VAC Accessory Power Output
- Adjustable Inherent Entrapment Protection System
- Full Systems Capability – Compatible with most access control devices and safety accessories
- Robust DC Control Circuit Supports Long-Distance Control Wiring Runs
- Timer-to-Close (0-180 seconds)
- Integrated Maglock Control
- Selectable Movement Warning Alarm
- Industrial-Size "0" Cross-the-Line Magnetic Reversing Contactor
- High-Starting Torque, Continuous-Duty Industrial Motor with Overload Protection mechanical features:
- Heavy-Duty Wormgear-in-Oil Gear Reducer
- Gate Speed of 90 Degrees in 12 Seconds
- Fully Adjustable Driven Limit System
- Baked-on High-Durability Powder coat Finish
- Manual Quick-Release System
- Removable Electrical Panel for Easy Servicing
- Pad Mount Standard
- Heavy-Gauge Weather-Resistant Housing

Model	Volt/PH	Price
	<b>1/2 H.P.</b>	
SW-470-50-11-S3	115/1	1369.00
SW-470-50-21-S3	230/1	1369.00



Typical Installation



**Call Toll Free  
1-800-233-1487**

## MODEL SW 490 Heavy Duty Swing Gate Operator



### GATE SIZE SELECTION GUIDE

RECOMMENDED CAPACITIES			
HP	MAX GATE WT. (LBS.)	MAX GATE WIDTH (FT.)	MAX CYCLES/HR
1/3	600	12	20
1/2	750	16	20
3/4	900	19	20
1	1000	22	20

### Applications:

The SW 490 Series Gate Operators Are Designed For Use On Commercial And Industrial Swing Gates Up To 22 Feet Wide And Up To 1000 Lbs.

### Features

- Built-in Radio Receiver
- GL Logic Control Board
- UL325-Compliant Entrapment Alarm
- Shadow, Interrupt & Exit Loop Inputs
- 24VAC Accessory Power Output
- Adjustable Inherent Entrapment Protection System
- Full Systems Capability – Compatible with most access control devices and safety accessories
- Robust DC Control Circuit Supports Long-Distance Control Wiring Runs
- Timer-to-Close (0-180 seconds)
- Integrated Maglock Control
- Selectable Movement Warning Alarm
- Industrial-Size 0 Cross-the-Line Magnetic Reversing Contactor
- High-Starting Torque, Continuous-Duty Industrial Motor with Overload Protection
- Sequenced Access Management System – Simple 4-Wire Connection mechanical features:
- Industrial Wormgear-in-Oil Gear Reducer
- Gate Speed of 90 Degrees in 12 Seconds
- Heavy-Duty Arm Assembly
- Fully Adjustable Driven Limit System
- Manual Quick-Release System
- Removable Electrical Panel for Easy Servicing
- Pad Mount
- Heavy-Gauge Weather-Resistant Cover

Model	Volt/PH	Price
	<b>1/2 H.P.</b>	
SW-490-50-11-S3	115/1	2246.00
SW-490-50-21-S3	230/1	2246.00
SW-490-50-23-S3	230/3	2246.00
	<b>3/4 H.P.</b>	
SW-490-75-11-S3	115/1	2405.00
SW-490-75-21-S3	230/1	2405.00
SW-490-75-23-S3	230/3	2405.00
	<b>1 H.P.</b>	
SW-490-100-11-S3	115/1	2591.00
SW-490-100-21-S3	230/1	2591.00
SW-490-100-23-S3	230/3	2591.00

**Warning:** This door operator is intended for use on vehicular doors. **MOTORIZED VEHICULAR DOORS CAN CAUSE SERIOUS INJURY OR DEATH!** Use entrapment protection equipment and other safety accessories on every door system

For options see page 67



Model	Volt/PH	Price
SL3000UL	1/2 H.P. 115/1	1926.00

Part No.	Option	List Price
----------	--------	------------

**MPEL** Mounting plate for Elite™ commercial gate operators (CSW200UL™ & SL3000UL™ models) (posts not included) \$105.00

**MSEL** Mounting stand for SL3000UL™, keeps operator high off the ground. No need to dig post holes. \$105.00

### SW2000UL Options

### Applications:

The SL3000UL Series Operators Are Designed for Commercial Use Swing Gates Up To 37 Feet Wide and 1000 lbs. Ideally Suited for Gated Communities, Estates, Etc.

### Features:

- Built-in radio receiver
- Alarm reset button
- 120VAC power
- Highly efficient, extremely quiet
- 24VDC Board
- Surge suppressor/lightning protection
- Soft stop
- Integrated loop detector
- Motor disconnect
- 30 to 1 gear reducer
- Precision limit switches
- Zinc plated chassis-eliminates corrosion
- Speed of 12" per second
- Timer to close-adjustable from 0-60 seconds
- Power on/off switch
- Inputs for loops, key switches, fire dept. switches, photo eyes, edge etc.
- Alarm and emergency reversing detection
- #41 Chain

## MODEL SL3000UL Commercial Slide Gate Operator



### GATE SIZE SELECTION GUIDE

RECOMMENDED CAPACITIES			
HP	MAX GATE WT. (LBS.)	MAX GATE WIDTH (FT.)	MAX CYCLES/HR
1/2	1000	37	cont.



Model	Volt/PH	Price
CSW200UL	1/2 H.P. 115/1	2206.00

Part No.	Option	List Price
----------	--------	------------

**AELD** Elite™ Plug-in Loop Detector simply plugs-in to the OmniControl™ board. \$178.00

**G65 18CSW\*** 120V heater modification, protects system to -40°F Use suffix H3 (Sample: CSW200ULDCH3) \$315.00

**MPEL** Post Mounting Plate for Elite™ commercial gate operators (CSW200UL™ & SL3000UL™ models) (posts not included) \$105.00

**86LM** Remote Antenna Mounting Kit For use with 312HM in remote locations. Kit contains antenna bracket and 15' of cable \$14.00 NET

**PowerHinge** Industrial Steel Gate Hinges (Pair) Weight capacity: 3,000 lbs. per pair \$143.00

**PowerHinge2** 1/2 Steel, 1/2 Aluminum Gate Hinges (Pair) Weight capacity: 1,000 lbs. per pair \$143.00

**PowerHinge3** Industrial Aluminum Gate Hinges (Pair) Weight capacity: 1,000 lbs. per pair \$143.00

### Applications:

The CSW200UL Series Operators Are Designed For Commercial and Industrial Swing Gates Up To 20 Feet Wide and Up To 600 lbs.

### Features:

- PROTECTED FROM LIGHTNING  
CSW200UL™  
Online Ordering at Your Convenience! • <http://dealer.chamberlain.com>  
GATE OPERATORS  
standard features:
- Built-in radio receiver
  - Alarm reset button
  - Highly efficient, extremely quiet
  - 120VAC power
  - Weatherproof high-density polyethylene cover
  - Gold zinc-plated chassis eliminates corrosion
  - 24VDC board
  - High-speed precision limit switches
  - Solid steel, machined pulley
  - Surge/Lightning protection
  - Speed: 90" in 15 seconds
  - Timer to close-adjustable from 0-60 seconds
  - Power on/off switch
  - Inputs for loops, key switches, fire dept. switches, photo eyes, edge etc.
  - Precision limit switches

## MODEL CSW200UL Commercial Swing Gate Operator



### GATE SIZE SELECTION GUIDE

RECOMMENDED CAPACITIES			
HP	MAX GATE WT. (LBS.)	MAX GATE WIDTH (FT.)	MAX CYCLES/HR
1/2	800	20	unlimited



**LOOKED  
HIGH AND LOW?**  
*Let us give you a hand*

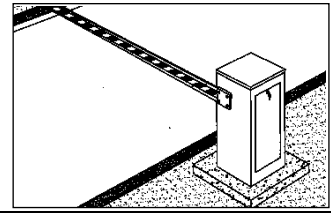


For options see page 67

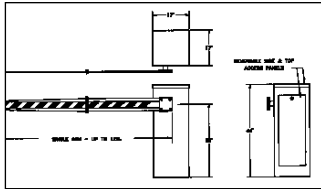
# BARRIER GATE OPERATORS

## Recommended

Use for areas where traffic control is a need. Choose from our Standard models for your application. Can't decide on a model for your application? Let us help by calling our Toll Free number.



## MODEL BG 770 Industrial Duty Barrier Operator



### Applications:

The BG 770 Series Parking Gates Are Designed For Use With Single Arms Up To 12 Ft. In Length (14 Ft. Driveways) With Usage Of Up To 100 Cycles Per Hr.

### Standard Features

- Full systems capability; compatible with most access control devices and safety accessories.
- Plug-in connectors for open loop detector and safety/close loop detector included in control box.
- Heavy 11 gauge pre-galvanized steel weatherproof cabinet with baked-on high durability powdercoat finish.
- Top and side access panels with key lock.
- Electrical controls in separate, removable enclosure.
- Industrial size 0 across-the-line reversing starter.
- Continuous duty 1/3 Hp industrial motor with overload protection.
- Two button control station, OPEN/CLOSE.
- 24VAC control circuit.
- Type L2 control wiring standard.
- Power ON/OFF switch.
- Convenience outlet (115V) included on IFSVAC models.
- Auto/Manual switch.
- Heavy duty wormgear-in-oil-bath speed reducer.
- Standard factory color-white.
- Maximum gate arm - 12 ft.
- Opening time approximately 4 seconds.



Model	Volt/PH	Price
	<b>1/3 HP</b>	
BG770-33-11	115/1	2246.00
BG770-33-21	230/1	2246.00
BG770-33-23	230/3	2246.00
BG770-33-43	460/3	2246.00
BG770-33-53	575/3	2246.00

Gate Arms (Not Supplied with operator)		
Part No.		Add to List Price
65-1209	Wishbone Arm, up to 12 ft in length	120.00
65-1210	Wood Articulated Arm, use when height limitations are present; avail. up to 12 ft.	239.00
65-1209-P	PVC Single Arm Up to 10 Ft. in length	50.00
65-1210-P	PVC Articulated Arm, use when height limitations are present; avail. up to 10 ft.	156.00
10-8019	PVC Arm Mounting Clamp (req'd w/PVC arm)	50.00
65-1210-K	Articulated Arm Kit (Wood Arm)	120.00

## MODEL BG 790 Heavy Industrial Duty Barrier Gate Operator



### Applications:

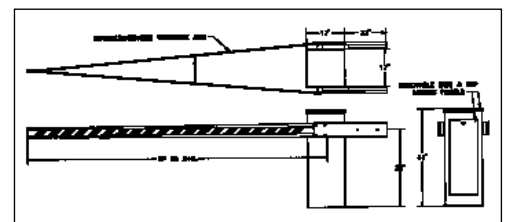
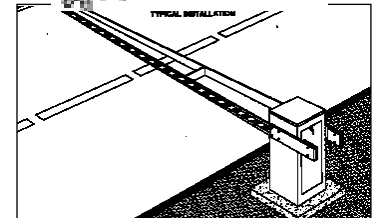
The BG 790 Series Barrier Gates Are Designed For Use With Wishbone-Type Arms Up To 24 ft. In Length And Usage Up To 25 Cycles Per Hr.

### Standard Features

- Full systems capability; compatible with most access control devices and safety accessories.
- Plug-in connectors for open loop detector and safety/close loop detector included in control box.
- Heavy 11 gauge pre-galvanized steel weatherproof cabinet with baked-on high durability powdercoat finish.
- Top and side access panels with key lock.
- Electrical controls in separate, removable enclosure.
- Industrial size 0 across-the-line reversing starter.
- Continuous duty 1/3 Hp industrial motor with overload protection.
- Two button control station, OPEN/CLOSE.
- 24VAC control circuit.
- Type L2 control wiring standard.
- Power ON/OFF switch.
- Convenience outlet (115V) included on IISVAC models.
- Auto/Manual switch.
- Heavy duty wormgear-in-oil-bath speed reducer.
- Standard factory color - white.
- Wishbone arm (24 ft.) and counterweights supplied.
- Maximum gate arm - 24 ft.
- Opening time approximately 8 seconds.

Model	Volt/PH	Price
	<b>1/3 HP</b>	
BG790-33-11	115/1	3588.00
BG790-33-21	230/1	3588.00
BG790-33-23	230/3	3588.00
BG790-33-43	460/3	3588.00
BG790-33-53	575/3	3588.00

Gate Arms (Not Supplied with operator)		
Part No.		Add to List Price
65-1208	Wishbone Arm, 24 feet with counter weights in length (supplied)	N/C
65-1208	Replacement Arm Only (no counter weights)	228.00



**Warning:** This door operator is intended for use on vehicular doors. **MOTORIZED VEHICULAR DOORS CAN CAUSE SERIOUS INJURY OR DEATH!** Use entrapment protection equipment and other safety accessories on every door system



# DOOR OPERATOR MODIFICATIONS/OPTIONS

PART NO.	DESCRIPTION	LGJ	MT	T	GT	APT	MJ	J	DJ,DH	MGJ	MH	H	GH	SD	GSD	ADD TO PRICE OF OPENER
71 B120	Solenoid Brake for 115V			•				•	•							82.00
71 B240	Solenoid Brake for 240V & 460V			•				•	•							82.00
71 B120H	Sol. Brake w/cable for 115V								•			•				90.00
71 B240H	Sol. Brake w/cable for 240V & 460V								•			•				90.00
71 B575H	Solenoid Brake for 575V								•			•				90.00
90 9214	Dynamic Brake, (Std. on var. spd.)			•	•	•		•				•		•		437.00
65 9212	Friction Clutch											•				190.00
65 9207	Auxiliary Trolley (#48 Chain)							•				•				317.00
65 9207 1	Auxiliary Trolley (#41 Chain)							•				•				345.00
65 9213	Dual Auxiliary Trolley (#48 Chain)							•				•				634.00
65 9213 1	Dual Auxiliary Trolley (#41 Chain)							•				•				689.00
65 5208	Dual Trolley Drive (#48 Chain)			•												285.00
65 5208 1	Dual Trolley Drive (#41 Chain)			•	•											299.00
65 5210	Minimum Depth			•												142.00
65 7001	Center Mount (For Model J)							•								59.00
65 9001	Center Mount (For Model GH)												•			150.00
02 515	Emergency Egress, Flush	•					•	•	•	•						78.00
65 5211	High Cycle			•										•		290.00
65 5501	Bi-Part Door													•	•	154.00
65 5502	Fusible Link, Single Slide													•	•	98.00
65 5503	Fusible Link, Bi-Part Slide													•	•	154.00
V/Model	Variable Speed				•								•			Call Factory
90 827	Decel at Full Open/Close (V/Only)				•								•			158.00
90 TS	TS Wiring Type (digital timer)			•	•			•		•		•	•	•	•	134.00
90 T	T Wiring Type (timer and relays)			•	•			•				•	•	•	•	158.00
90 T1	T1 Wiring Type			•	•			•				•	•	•	•	158.00
90 T2	T2 Wiring Type		•	•	•		•	•	•	•	•	•	•	•	•	158.00
90 D1	D1 Wiring Type	•	•	•	•	•	•	•	•	•	•	•	•	•	•	Call Factory
90 E2	E2 Wiring Type			•	•			•				•	•	•	•	49.00
90 F2	F2 Wiring Type			•	•			•				•	•	•	•	112.00
90 9206K	Delay On Reverse, K Line			•	•			•				•	•	•	•	Call
90 9207M	Mid Stop, Mini Limit Switches			•	•			•				•	•	•	•	31.00
65 ID	Two Door Interlock System			•	•			•				•	•	•	•	42.00
90 RL	Reverse Limits		•	•	•		•	•	•			•	•	•	•	12.00
2B0442	Long Dist. Cont. Wrg., 24VAC		•	•	•		•	•	•	•	•	•	•	•	•	48.00
90 503000	Non-Resettable Counter			•	•	•	•	•	•	•	•	•	•	•	•	56.00
90 100 OP	100VA Transformer			•	•			•				•	•	•	•	87.00
90 254000	Overload Relay			•	•			•				•	•	•	•	46.00
90 9211	115V Control Circuit			•	•			•				•	•	•	•	104.00
90 9209	Gnd. & Fuse XMFR Secondary			•	•			•				•	•	•	•	33.00
90 54028	Courtesy Light. Std. Oper.			•	•	•		•				•	•	•	•	99.00
90 54028M	Courtesy Light. Med. Duty Oper.		•	•	•		•	•		•	•	•	•	•	•	66.00
90 038024	Size $\phi$ Reversing Contactor			•	•			•				•	•	•	•	46.00
65 20	TEFC Motor			•	•			•	•			•	•	•	•	67.00
65 9206	Watertight/Oiltight Control Encl.			•	•			•				•	•	•	•	328.00
C/Model No.	Carwash			•	•			•				•	•	•	•	591.00
N4/Model No.	Watertight/Oiltight (NEMA 4/12)			•	•			•				•	•	•	•	1082.00
N4x/Model No.	Corrosion Resistant (NEMA 4X)			•	•			•				•	•	•	•	1333.00
N7/Model No.	Hazardous Area (NEMA 7/9)			•	•			•				•	•	•	•	1738.00
90 9204	JIC Specifications			•	•			•				•	•	•	•	1256.00
90 9212.	GM Specifications			•	•			•				•	•	•	•	1988.00
65 3012 1	Self-reg. Heater 115V (plug type)											•	•	•	•	134.00
65 3012 2	Self-reg. Heater 230V (plug type)											•	•	•	•	218.00

POWER TRANSMISSION

CONTROL WIRING

SPECIAL ENVIRONMENT



# GATE OPERATOR MODIFICATIONS/OPTIONS

PART NO.	DESCRIPTION	SW420	SW470	SW490	SW2000	SW2200	SW540	SW570	SW580	SW590	SW1000	SLMAX	BG770	BG790	BG3000	BG3100	ADD TO LIST PRICE	
GATE OPERATOR MODIFICATIONS	G90-100-OP	100 VA Transformer	•	•	•		•	•	•	•			•	•			104.00	
	G65-RSW-P	*Pedestal Mount Kit															88.00	
	G65-RSW-D	Pad Mount Kit	•														32.00	
	G305-803002	Post Mount Kit (U-Bolts only)	•	•													17.00	
	G71-26438	Timer To Close												•	•		104.00	
	G90-9210	Aux. Limit Sws. (wire leads)	•	•	•			•	•	•	•						13.00	
	G90-9210-T	Aux. Limit Sws. (term conn.)	•	•	•			•	•	•	•						13.00	
	G90-278002.	Aux. Contact Block (wire leads)	•	•	•			•	•	•	•						24.00	
	G90-278002-T	Aux. Contact Block (Term conn.)	•	•	•			•	•	•	•						29.00	
	G90-5024	Long Distance Control Wiring (24VAC)												•	•			39.00
	G90-50115	Long Distance Control Wiring (115VAC)												•	•			63.00
	G90-503000	Non-Resettable Counter	•	•	•			•		•	•	•		•	•			113.00
	G65-3011-1	Self-Regulating Heater 115V/230V (Tape Wrap)	•	•										•	•			53.00
	G65-3012-BG	Self-Regulating Heater 115V (Plug Type)												•	•	•		137.00
	G65-3012-BGC	Self-Regulating Heater 230V (Plug Type)												•	•	•		186.00
G65-3012-SL	Self-Regulating Heater (Plug Type)								•	•		•					241.00	
G65-3012-SLC	Self-Regulating Heater 16oz. Temp Oil								•	•		•					186.00	
G65-3012SW	Self-Regulating Heater (Plug Type)			•		•											241.00	
G65-3012SWC	Self-Regulating Heater 16oz. Temp Oil			•		•											186.00	
G65-1208R	Replacement Arm Only ( no counter weights)		•	•		•										•	241.00	
G90-3004	Separate Controls in NEMA4 Enclosure		•	•		•			•	•			•	•		•	319.00	



**The MINIkey is a self-contained keypad** which controls a single door or gate entrance. It is engineered to be rugged and vandal resistant but crafted for interior or exterior use. It consists of a brushed stainless steel faceplate and a recessed, sidelit metal keypad with yellow numbers for excellent visibility in bright sunlight and total darkness. Despite its compact size, the MINIkey is

loaded with many features not typically found in other stand-alone access systems. For applications that require an entry and exit reader, the MINIkey supports a second keypad unit that connects directly to the master unit.

### STANDARD FEATURES

- Four or Five Digit Entry Codes
- Programmable Relay Times from 1-99 Seconds
- Non-Volatile Memory to Ensure Database is Retained
- Lightning Protection on Inputs
- Clock Input for Timed Control of Entry Codes
- Sealed, Lighted Metal Keypad
- Strikes & Out (pin retry lockout)
- Two Relays (main & aux.)
- Relay Hold Capacity

### OPTIONS

SNRKLS Remote Keypad Lighted Housing for Exit Reader

### ORDERING

SNMKSGS	5 capacity. Grained Stainless Steel. Surface Mount	\$490.00
SNMK10OGS	100 cap. Grained Stainless Steel. Surface Mount	\$686.00
SNMK500GS	500 cap. Grained Stainless Steel. Surface Mount	\$882.00
SNMKSGF	5 cap.. Grained Stainless Steel. Flush Mount	\$696.00
SNMK10OGF	100 cap.. Grained Stainless Steel. Flush Mount	\$892.00
SNMK500GF	500 cap., Grained Stainless Steel, Flush Mount	\$1088.00
SNARKLS	Remote Keypad Grained Stainless Steel, Ltd Hsg	\$343.00



**The PROcard system is a self contained access control system** built for flexibility, reliability, and ease of use. The stand-alone unit supports up to 2 card readers, 2000 cardholders, and 8 time zones. The unit is programmed using a built-in keypad and audio feedback so a computer is not required. PROcard supports all the major reader technologies including proximity, wiegand, radio frequency, barium ferrite, biometrics, magnetic stripe and keypad.

The standard PROcard is supplied with a Wiegand swipe reader. The reader can be replaced with other technologies to meet your needs. If the reader will be remote from the housing use the PROcard Processor model number.

### Standard Features

- Up to 2000 Cardholder Capacity
- EightTime Zones
- DoorOpen Sensor
- Weather & Vandal Resistant Design
- Non-Volatile Memory to Ensure Database is Retained
- Lightning Protection on Inputs
- Bulk Cardholder Entry a Timed orTrue Anti-Passback
- Day Light Savings / Leap Year
- Two Card Readers Support
- Automatic Door/Gate Unlock Scheduling
- Alarm Shunt Relay
- Real-Time PrinterOutput
- Automatic Door/Gate Unlock Scheduling
- Second Relay Control for Secondary Door

### ORDERING

SNKPCB1003	100 cap. Lighted	\$1476.00
SNKPCB5003	500 cap. Lighted	\$1623.00
SNKPCB10003	1000 cap. Lighted	\$1819.00
SNKPCB20005	2000 cap. Lighted	\$2015.00



The PROkey System is self-contained, standalone keypad for the control of a single door or gate. A four or five digit customized personal identification number is assigned to an individual (or group of individuals) for controlled access. PROkey supports up to 2000 users, 8 time zones, and a pin retry lock-out feature. The unit is programmed using a built-in keypad and audio feedback so a computer is not required.

### STANDARD FEATURES

- Up to 2000 Cardholder Capacity
- Bulk Cardholder Entry
- Door Open Sensor
- Timed Anti-Passback
- Day Light Savings / Leap Year
- Non-Volatile Memory to Ensure Database is Retained
- Lightning Protection on Inputs
- EightTime Zones
- Strikes & Out (pin retry count)
- Alarm Shunt Relay
- Real-Time PrinterOutput
- Chrome Plated Keypad
- Automatic Door/Gate Unlock Scheduling

### ORDERING

SNPK100L	100 cap.	\$1033.00
SNPK500L	500 cap.	\$1133.00
SNPK1000L	1000 cap.	\$1329.00
SNPK2000L	2000 cap.	\$1421.00

### Cards

SNACB-3F	Barrium Ferrite	\$6.00
----------	-----------------	--------